

**REQUEST FOR PROPOSALS**  
**CITY OF KEY COLONY BEACH, FL**  
**Public ADA Restrooms at Sunset Park – Amendment #1**

The City of Key Colony Beach is accepting competitive proposals from qualified companies to provide ~~either modular or pre-fabrication or built-in-place~~ ADA accessible restrooms, to withstand 185 mph winds, for a park facility. The City, at its sole discretion, will decide which option is best overall for the City. Exhibit A states the details. **Please note:** There is a pdf file embedded in “Exhibit A”. This file contains the specifications.

The CITY OF KEY COLONY BEACH reserves the rights to negotiate with any or all companies submitting proposals. Small and minority businesses, women’s business enterprises, and labor surplus area firms are encouraged to submit qualifications and firms using subcontractors must solicit such firms in the subcontracting process.

The CITY OF KEY COLONY BEACH is an equal opportunity employer without regard to race, color, sex, age, religion, national origin, persons with disabilities, or limited English proficiency.

**See Exhibit “A” below**

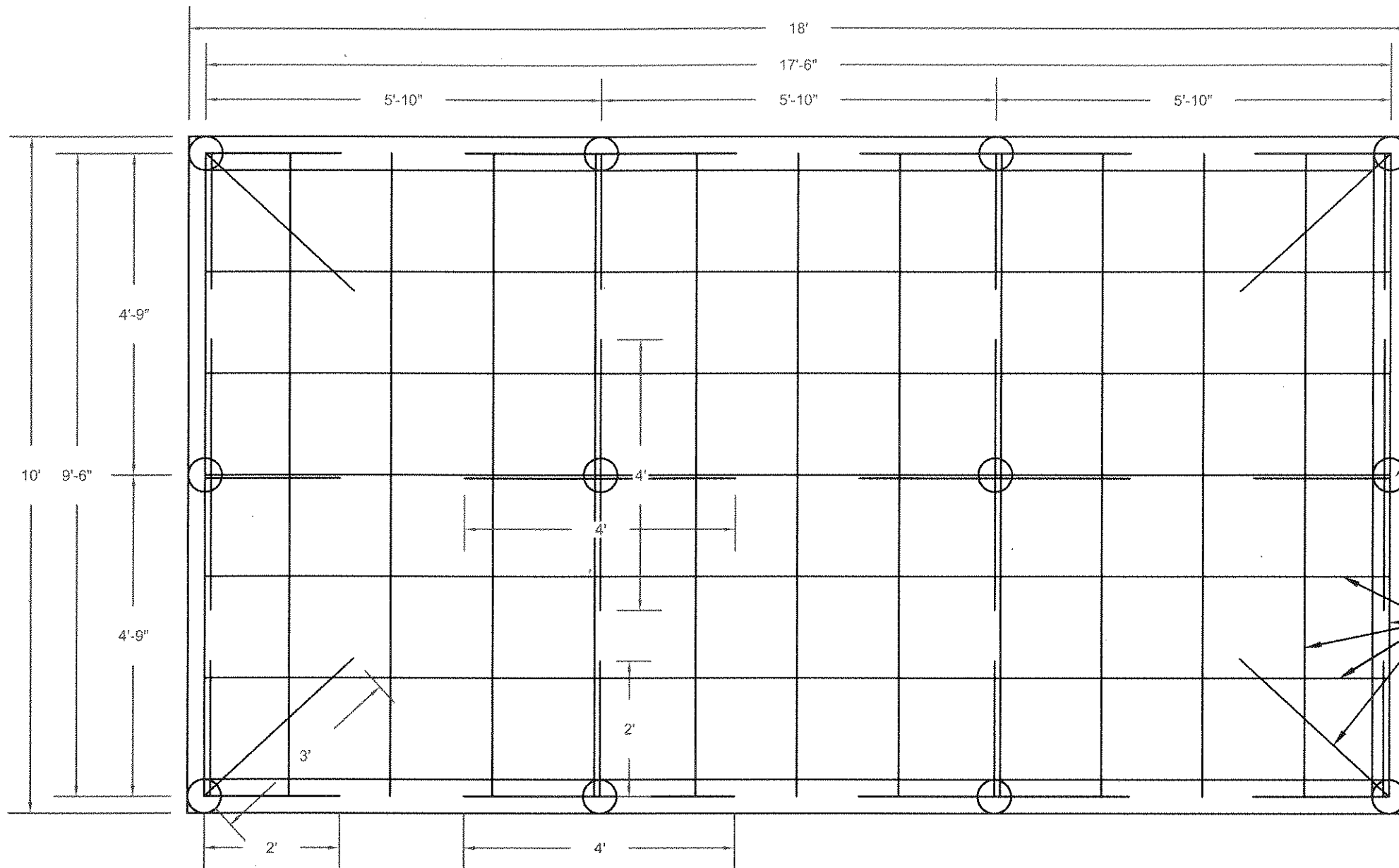
# EXHIBIT A

**NAME OF ENTITY:** City of Key Colony Beach  
**NAME OF PROJECT:** Sunset Park ADA Restroom Facilities

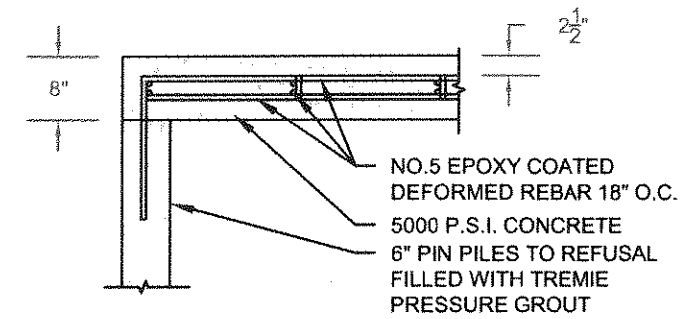
NUMBER OF SEGMENTS TO PROJECT: 1

<p>Segment 1  <u>Description:</u> Materials, equipment, and labor, required to:  <b>Options:</b></p> <ol style="list-style-type: none"> <li>1. Purchase and install prefabricated modular restroom building at Sunset Park. Including necessary electrical, plumbing and permanently installed bathroom fixtures. (See <b>PDF</b> General Minimum Specifications <u>below</u> for Precast Concrete Restrooms). Dimensions 10' x 18' x 9' or equivalent - Two Room ADA Bathrooms w/ Plumbing Chase</li> <li><del>2. Built in Place restroom building at Sunset Park. Including necessary electrical, plumbing and permanently installed bathroom fixtures. (See <b>PDF</b> General Minimum Specifications <u>below</u> for Precast Concrete Restrooms) Built in Place must meet or exceed specifications below. All exceptions MUST be noted in detail in the bid. Dimensions 10' x 18' x 9' or equivalent - Two Room ADA Bathrooms w/ Plumbing Chase</del></li> </ol>	<p><b><u>Furnish Only</u></b></p> <p>\$ _____</p>	<p><b><u>Furnish &amp; Install</u></b></p> <p>\$ _____</p>
-------------------------------------------------------------------------------------------------------------------------------------------------------------------------------------------------------------------------------------------------------------------------------------------------------------------------------------------------------------------------------------------------------------------------------------------------------------------------------------------------------------------------------------------------------------------------------------------------------------------------------------------------------------------------------------------------------------------------------------------------------------------------------------------------------------------------------------------------------------------------------------------------------------------------------------------------------------------------------	---------------------------------------------------	------------------------------------------------------------





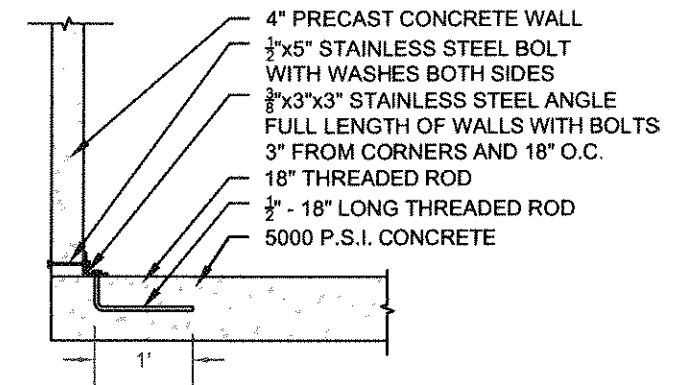
**FLOOR PLAN**  
SCALE: 1/2" = 1'



**SECTION VIEW**  
N.T.S.

6" PIN PILES TO REFUSAL

NO.5 EPOXY COATED  
DEFORMED REBAR 18" O.C.



**PRECAST CONCRETE WALL TO REINFORCED  
CONCRETE FLOOR CONNECTION**  
N.T.S.

NOTE: ALL DEFORMED REBAR TO BE  
MIN. 2 1/2" CLEAR FROM SURFACE AND  
EDGE OF CONCRETE

DENNIS R. PETERS P.E., P.L.S., B.C.O.  
PA PROFESSIONAL ENGINEER REGISTERED

H. ALAN MOONEY FLORIDA REGISTERED  
PROFESSIONAL ENGINEER NO. 81959

**CRITERIUM-PETERS ENGINEERS**

dpeters@criterium.com - www.criterium-peters.com

100 Robbins Avenue  
Berwick, Pa. 18603  
ph:(570) 752-8044

40 West Main Street  
Bloomsburg, Pa. 17815  
ph:(570) 387-0334

Scale: 1/2" = 1'

Dwn By: MDC

File No.: 19-02

Date: 3/1/19

Ck. By: DRP

Sheet 1 of 1

**PIN PILING AND CONCRETE FLOOR  
SUNSET PARK, KEY COLONY BEACH  
ADA RESTROOM FACILITIES**

COPYRIGHT CRITERIUM-PETERS ENGINEERS 2019. THESE PLANS ARE INSTRUMENTS OF SERVICE AND REMAIN THE EXCLUSIVE PROPERTY OF PETERS CONSULTANTS, INC. THE CLIENT IS GRANTED A NON-EXCLUSIVE LICENSE TO USE THE PLANS SOLELY TO CONSTRUCT THE PROJECT DEPICTED ON THE PLANS. THE PLANS MAY NOT BE MODIFIED IN ANY WAY AND MAY NOT BE USED FOR SUBSEQUENT ADDITIONS, RENOVATIONS, MODIFICATIONS, OR ALTERATIONS TO THE PROJECT WITHOUT THE EXPRESS WRITTEN CONSENT OF PETERS CONSULTANTS, INC. PETERS CONSULTANTS, INC. ASSUMES NO LIABILITY FOR USE OF THE PLANS BEYOND THE NONEXCLUSIVE LICENSE GRANTED HEREIN.

**12. REINFORCED CONCRETE FLOOR, PIN PILING  
AND PRECAST CONCRETE WALL TO REINFORCED CONCRETE FLOOR CONNECTION**

**A. REINFORCED CONCRETE FLOOR**

A reinforced concrete floor will be installed under the Sunset Park ADA Restroom Facility.

The concrete for the floor will be 5,000 psi, air entrained, plant mixed concrete.

The edge of the new concrete floor will be inset 1/2" from the exterior face of the reinforced concrete partitions of the restroom facility.

Reinforcing in the 8" thick concrete floor will be as shown on the plan entitled Pin Piling and Concrete Foundation, Sunset Park, Key Colony Beach, ADA Restroom Facilities, that is attached to these specifications and will basically consist of two rows of 5/8" deformed epoxy coated reinforcement located at depths of 2 1/2" below the surface and 2 1/2" inches above the bottom of the 8" thick concrete floor.

The surface of the concrete floor will be epoxy painted with texture additives.

Concrete will meet the requirements of Section 5 of these specifications.

Steel deformed reinforcing bars will meet the requirements of the American Institute of Steel Construction for grade 60, epoxy coated, deformed, reinforcing bars. All splices shall be overlapped a minimum of 3'. Grid reinforcing shall be 18" x 18" c-c and 2 1/2" inches clear of all edges of concrete.

The top horizontal layer of deformed reinforcing bars will be tied into pin piles, as shown on the plan entitled Pin Piling and Concrete Foundation, Sunset Park, Key Colony Beach, ADA Restroom Facilities.

**B. PIN PILING**

Install pin piling per the plan entitled Pin Piling and Concrete Foundation, Sunset Park, Key Colony Beach, ADA Restroom Facilities and the following specifications below:

Drive Schedule 80, galvanized, 6" diameter piping vertically at the locations shown on the plan entitled Pin Piling and Concrete Foundation, Sunset Park, Key Colony Beach, ADA Restroom Facilities by use of a 580 pound hydraulic hammer mounted on a skid steer or mini excavator to refusal or drill piles with water only to 6' below solid bedrock.

Install epoxy coated #5 rebar as shown on the attached plan entitled Pin Piling and Concrete Foundation, Sunset Park, Key Colony Beach, ADA Restroom Facilities to the bottom of the drilled or hydraulically rammed hole.

If using hydraulically rammed steel pipe casing, remove the casing and as the casing is removed, the remaining hole will be grouted with tremie grout installed by pressure grouting to force the grout into the surrounding bedrock. The epoxy coated #5 reinforcing bars need to be tied to the

top layer of reinforced concrete floor reinforcement.

### **C. PRECAST CONCRETE WALL TO REINFORCED CONCRETE FLOOR CONNECTION**

Install precast concrete wall to reinforced concrete floor connections per the plan entitled Pin Piling and Concrete Foundation, Sunset Park, Key Colony Beach, ADA Restroom Facilities to the precast concrete wall and reinforced concrete floor.

Place stainless steel anchor bolts, 1 ½" from inside face of precast concrete wall, 3" from corner, at time reinforced concrete floor is being poured, spaced 18" c-c ending 3" from corner. Continue pattern along remaining walls.

Anchor bolts shall be ½" stainless steel threaded rods, 18" long and a 90 degree bend, having 6" vertically and 12" horizontally.

3/8" x 3" x 3" stainless steel angle shall be placed around the entire inside perimeter, having rounded edges. Holes shall be pre-drilled in the same horizontal locations as the anchor bolts and pre-drilled 1 ½" up from reinforced concrete floor.

A 1" stainless steel washer shall be placed on each anchor bolt along with a stainless steel lock wash and stainless steel nut.

Drill ½" holes through entire precast concrete walls in the same vertical locations in the stainless steel angle.

Place ½" stainless steel full threaded bolts, 5" long, through precast concrete wall, threads to the exterior side of walls. Place 2" square stainless steel plates over threaded end of bolts, along with a stainless steel washer, a stainless steel lock washer and stainless steel nut.

Cut all bolts at exterior flush with full thread on nuts.