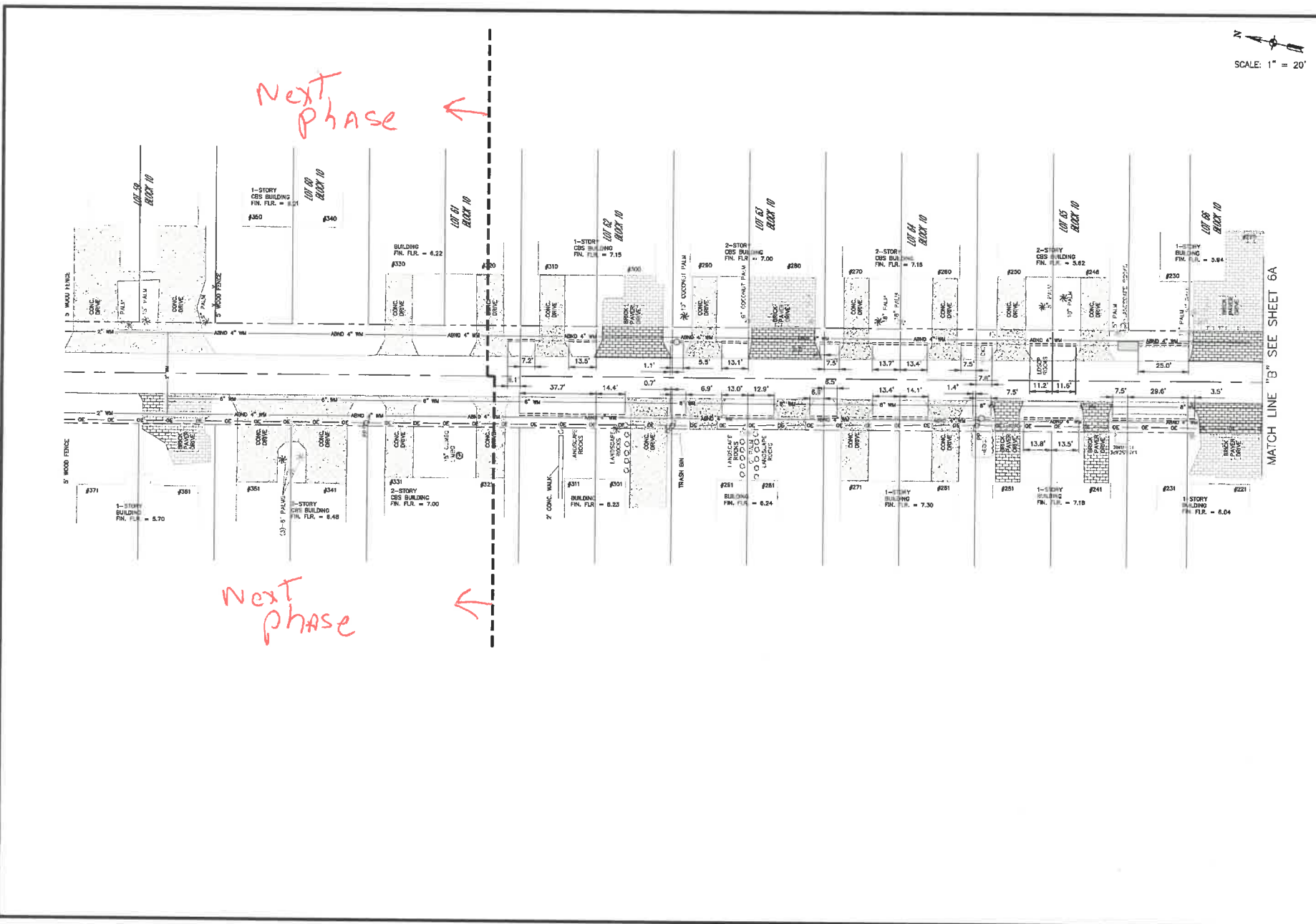


City of Key Colony Beach
 SWAG 10th Street Stormwater Improvements, Phase 2A
 Swale Closure and Driveway Restoration Cost Allocation

0604-17-1
 7/13/2022

Address	Perf Pipe Length (LF)	Inline Drain (EA)	Crushed Stone Volume (CY)	Swale Closure Cost	Existing Driveway Type	Paver Area (SF)	Paver Replacement Cost	Total Cost	Comment
948 W. Ocean Drive	0	0	0.0	\$ -	paver	existing to remain	\$ -	\$ -	
1000 W. Ocean Drive	0	0	0.0	\$ -	concrete	0	\$ -	\$ -	Should not be impacted directly by construction.
121 10th Street	4	0.5	2.3	\$ 1,308	concrete	0	\$ -	\$ 1,308	Existing Swale to Remain
140 10th Street	0	0	0.0	\$ -	concrete	0	\$ -	\$ -	Swale closure adjoining 141
141 10th Street	20	1	13.2	\$ 3,753	paver	191	\$ 806	\$ 4,559	driveway shared with 150
150 10th Street	4	0	2.7	\$ 361	paver	390	\$ 1,647	\$ 2,008	
151 10th Street	3	1	2.1	\$ 2,282	paver	438	\$ 1,849	\$ 4,131	driveway shared with 140, but fronts 150
160 10th Street	21	0	13.9	\$ 1,850	concrete	0	\$ -	\$ 1,850	
161 10th Street	13	0.5	8.7	\$ 2,154	paver	326	\$ 1,376	\$ 3,530	shared driveway with 171
170 10th Street	21	0	14.0	\$ 1,859	concrete	0	\$ -	\$ 1,859	
171 10th Street	14	0.5	9.5	\$ 2,260	paver	326	\$ 1,376	\$ 3,636	shared driveway with 161
180 10th Street	21	0	14.0	\$ 1,859	concrete	0	\$ -	\$ 1,859	
181 10th Street	17	1	11.4	\$ 3,524	paver	247	\$ 1,043	\$ 4,567	
190 10th Street	21	0	14.0	\$ 1,859	concrete	0	\$ -	\$ 1,859	
191 10th Street	18	1	12.1	\$ 3,612	paver	251	\$ 1,060	\$ 4,672	
200 10th Street	21	0	14.0	\$ 1,859	concrete	0	\$ -	\$ 1,859	
201 10th Street	21	0.5	13.9	\$ 2,850	concrete	0	\$ -	\$ 2,850	
210 10th Street	10	0	6.5	\$ 863	concrete	0	\$ -	\$ 863	
211 10th Street	11	0	7.2	\$ 960	concrete	0	\$ -	\$ 960	
220 10th Street	0	0	0.0	\$ -	paver	567	\$ 2,394	\$ 2,394	shared driveway with 230 but fronts 220
221 10th Street	4	0	2.3	\$ 308	paver	503	\$ 2,124	\$ 2,432	shared driveway with 231 but fronts 221
230 10th Street	25	0	16.5	\$ 2,202	concrete	0	\$ -	\$ 2,202	shared driveway with 220
231 10th Street	30	0	19.6	\$ 2,607	concrete	0	\$ -	\$ 2,607	shared driveway with 221
241 10th Street	21	0	13.9	\$ 1,850	paver	194	\$ 819	\$ 2,669	
246 10th Street	12	0	7.7	\$ 1,022	concrete	0	\$ -	\$ 1,022	
250 10th Street	19	0	12.6	\$ 1,674	concrete	0	\$ -	\$ 1,674	
251 10th Street	21	0.5	14.1	\$ 2,876	paver	190	\$ 802	\$ 3,678	
260 10th Street	21	0	13.8	\$ 1,841	concrete	0	\$ -	\$ 1,841	
261 10th Street	16	0.5	10.3	\$ 2,365	concrete	0	\$ -	\$ 2,365	
270 10th Street	21	0	14.0	\$ 1,867	concrete	0	\$ -	\$ 1,867	
271 10th Street	20	0	13.2	\$ 1,753	concrete	0	\$ -	\$ 1,753	
280 10th Street	2	0	1.5	\$ 194	paver	494	\$ 2,086	\$ 2,280	large driveway
281 10th Street	20	0	13.1	\$ 1,744	concrete	0	\$ -	\$ 1,744	
290 10th Street	19	0.5	12.3	\$ 2,638	concrete	0	\$ -	\$ 2,638	
291 10th Street	20	0	13.2	\$ 1,753	concrete	0	\$ -	\$ 1,753	
300 10th Street	0	0.5	0.0	\$ 1,000	paver	488	\$ 2,060	\$ 3,060	large driveway
301 10th Street	15	0	10.0	\$ 1,330	concrete	0	\$ -	\$ 1,330	
310 10th Street	21	0	13.7	\$ 1,823	concrete	0	\$ -	\$ 1,823	
311 10th Street	38	0	24.9	\$ 3,321	concrete	0	\$ -	\$ 3,321	



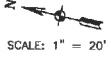
N
SCALE: 1" = 20'

Next Phase ←

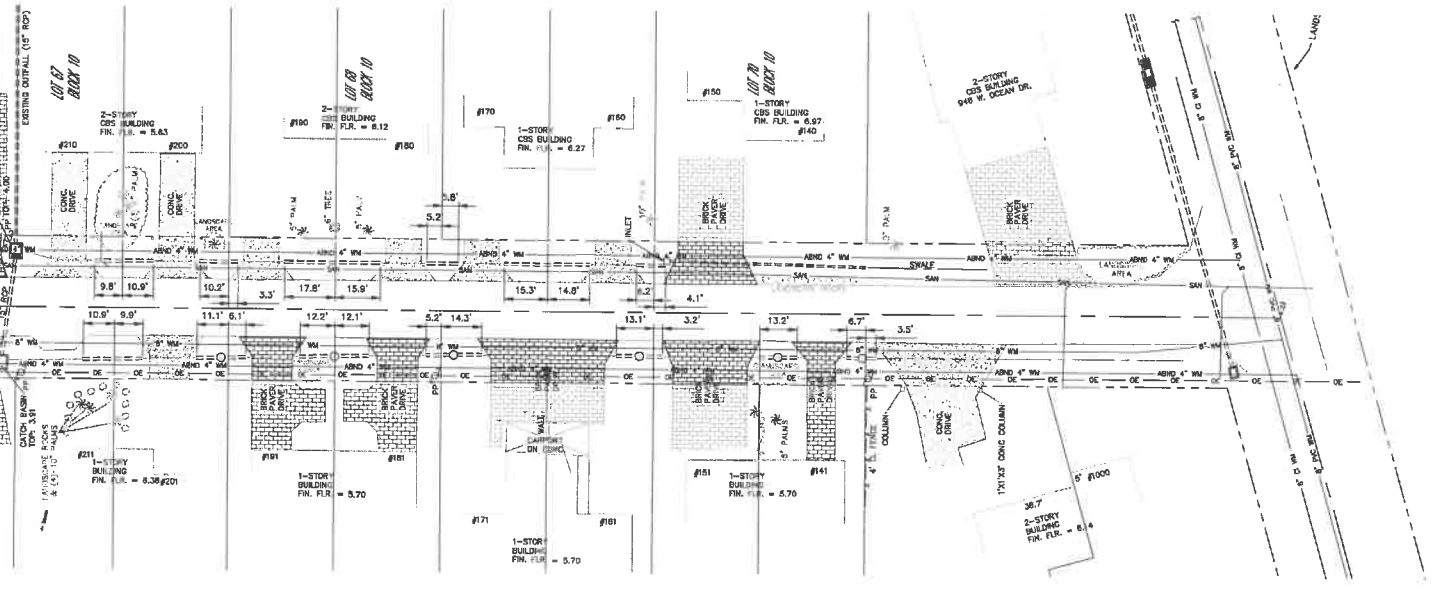
Next Phase ←

MATCH LINE "B" SEE SHEET 6A

		DATE: 05/23/22 DRAWN BY: [Name] CHECKED BY: [Name]
MITTALIER & ASSOCIATES, INC. REGISTERED PROFESSIONAL ENGINEERS 580-1 WELLS ROAD, DUNEDIN, FL 33511 TEL: (800) 278-0030 FAX: (800) 278-0840		NO. DATE BY 1 INCH
CITY OF KEY COLONY BEACH SWAG 10th Street Stormwater Improvements, Phase 2A Plan - 10th Street (ADDITIVE ALTERNATE) Monroe County, Florida		JOB NO. 0604-17-1 SHEET NO. 5A



MATCH LINE "A" SEE SHEET 6



CITY OF KEY COLONY BEACH
 SWAG 10th Street Stormwater Improvements, Phase 2A
 Plan - 10th Street (ADDITIVE ALTERNATE)
 Monroe County, Florida

JOB NO. 0804-17-1
 SHEET NO. 6A

MITTAUER CONSULTING
 3815 W. WELLS ROAD, ORANGE PARK, FLORIDA 32073
 TEL: 904.278-6032 FAX: 904.278-6840

DATE	BY	NO	REVISION DESCRIPTION
08/21/22		1	INITIAL