

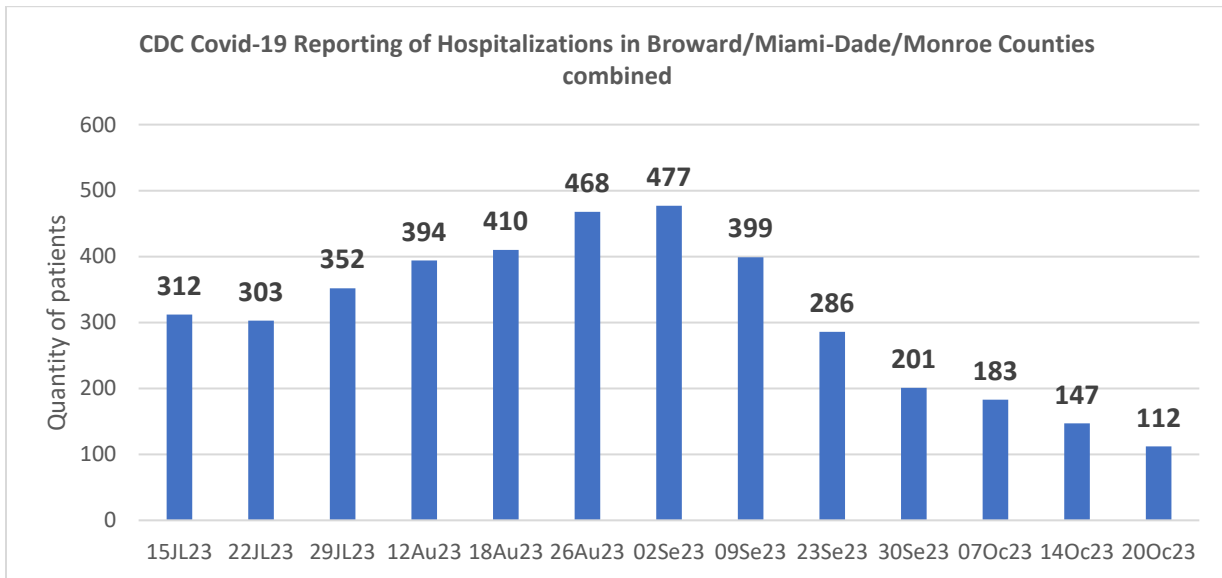
City of Key Colony Beach

Wastewater Sampling Update for Concern Virus's – October 30, 2023

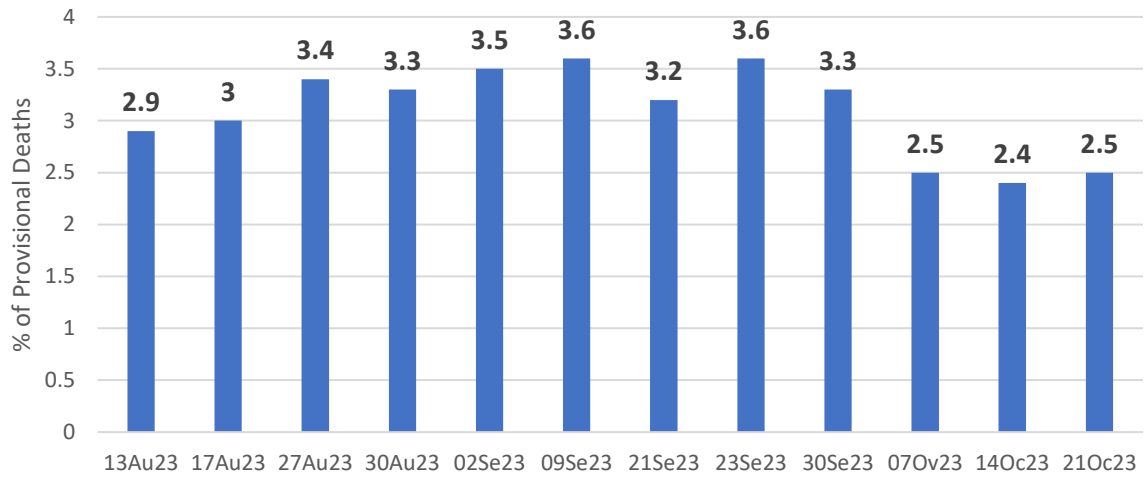
✓ **SARS-CoV-2 Virus – Covid -19**

○ **General overview data from CDC and Florida Dept of Health websites:**

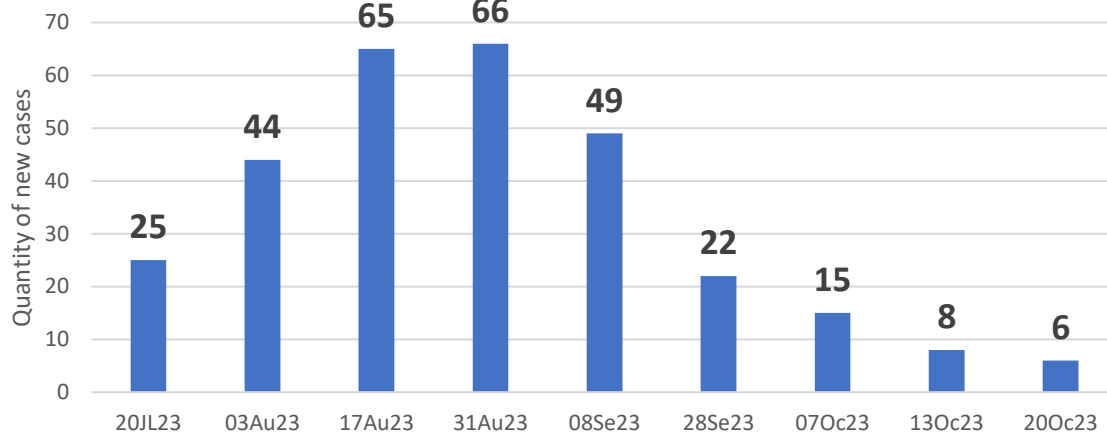
- CDC Hospitalizations Summary – 112 cases, -23.8 % decrease (Broward, Miami-Dade, and Monroe County data together, data through 21Oc23).
- CDC Death rates due to Covid-19 in the last week for Florida, 2.5%, an 8.7% increase from last week (data through 21Oc23)
- Florida Department of Health Weekly Situation Report (data as of 20Oc23):
 - Overall State of Florida – 5,052 new cases (decreasing)
 - Monroe County - 6 new cases (decreasing)
 - Dade County – 528 new cases (decreasing)
 - Broward County – 320 new cases (decreasing)



CDC Covid-19 Death Rates - State of Florida



Monroe County new Covid-19 cases - Reported by the Florida Department of Health



- ✓ Specific data for Key Colony Beach- wastewater sampling (data ended 26Se23)
 - Onboarding process completed with new contactor, Verily.
 - Sample kits received for re-start of KCB sampling from Verily.
 - **Sample collection placed on hold 23Oc23 due to lawsuit filed against the CDC for a bid protest from Biobot.**
 - **Court date scheduled for 24Ja24, thus expect no progress on collecting KCB data until after a court decision.**
 - Limited data trends available for Monroe County at this time.

Summary Report by Tom Harding, based on CDC/State of Florida data through 28Oc23.

Florida Flu Review

Season: 2023-24

Week 42: October 15, 2023–October 21, 2023

Data are provisional and subject to change

Flu season information

Influenza (flu) is a respiratory infection caused by a variety of flu viruses spread primarily by droplets made when infected people cough, sneeze, or talk. Less often, a person might become infected with flu by touching a surface or object contaminated with flu virus and then touching their own mouth, eyes, or nose. **Influenza-like-illness (ILI)** is defined as the presence of fever and cough or fever and sore throat without a laboratory-confirmed etiology.

Season

The flu reporting year uses standard reporting weeks outlined by the Centers for Disease Control and Prevention (CDC), where every year has 52 or 53 reporting weeks. The flu season ends May 18, 2024 (week 20), surveillance continues year round. Seasons vary in timing, severity, and duration. It is not possible to predict what the 2023-24 flu season will be like in Florida.

Surveillance and investigation

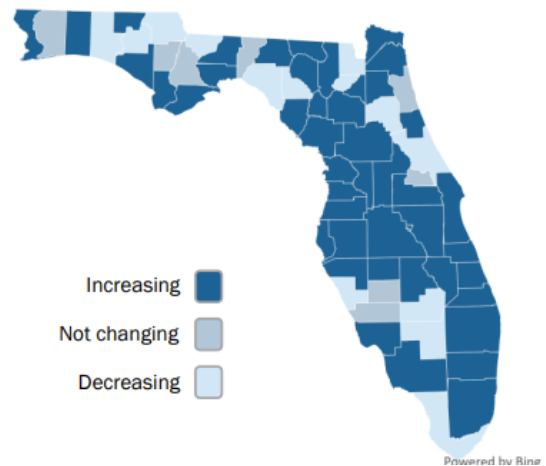
Surveillance is conducted to detect changes in the flu virus to help determine the annual northern hemisphere vaccine composition and to prepare for potential pandemics. Surveillance is also conducted to identify any unusually severe presentations of flu, detect outbreaks and determine the onset, peak, and wane of the flu season to assist with prevention, particularly in high-risk populations like the very young, adults aged ≥65 years, and pregnant people.

Individual cases are not reportable in Florida with the exception of novel flu A (a new subtype of flu A) and flu-associated pediatric deaths. All outbreaks are reportable in Florida.

Current predominant strain	Flu positivity rate
Influenza A H1N1 2009 Pandemic	Increased
Flu emergency department visits	Outbreaks in the current week*
Increased	3

*Counties with outbreaks in current week: Brevard (1), Jackson (1), Leon (1)

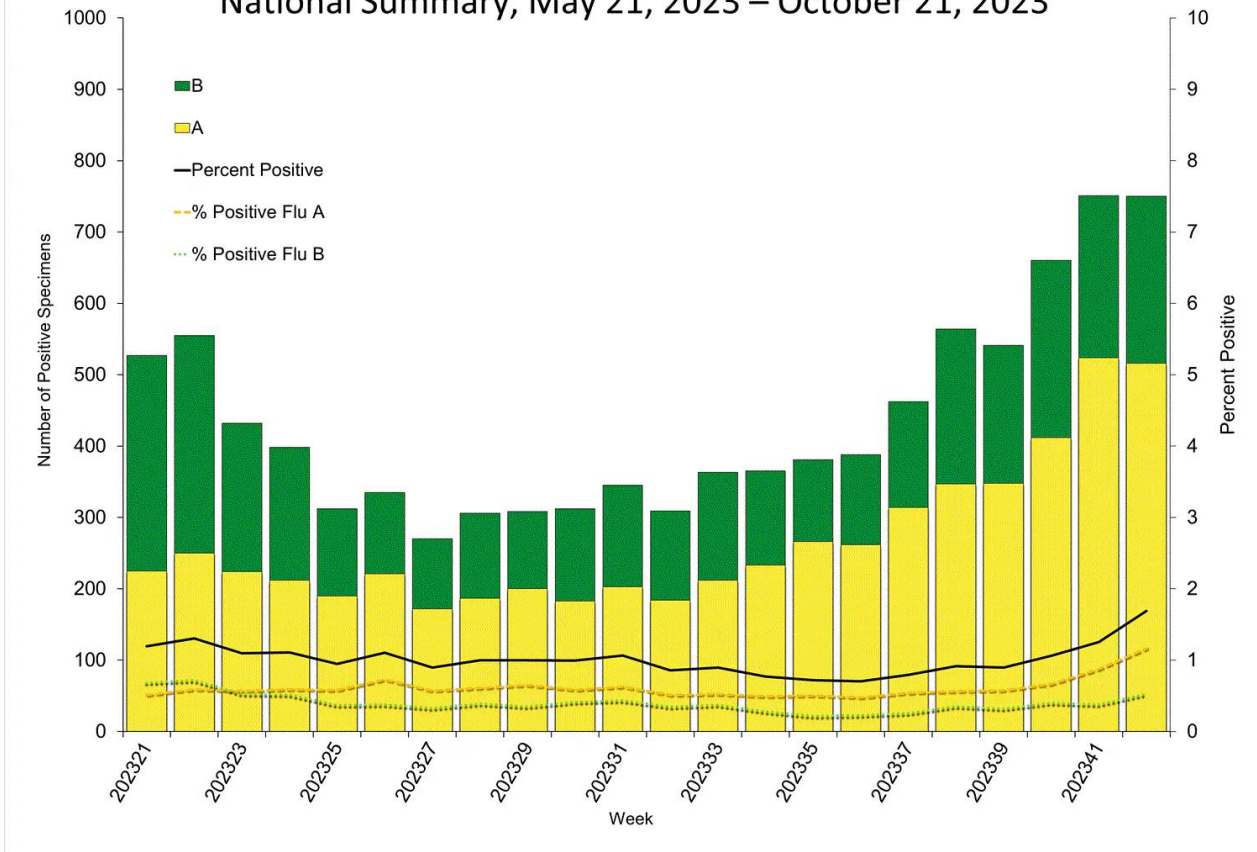
County flu and ILI activity trend



Powered by Rina

From Florida Department of Health, weekly Flu summary, 28Oc23 copied from their website.

Influenza Positive Tests Reported to CDC by U.S. Clinical Laboratories, National Summary, May 21, 2023 – October 21, 2023



Copied from CDC website – FLUVIEW 29Oc23