



Tropical Depression Fourteen Briefing

12:00 PM ET

Saturday, Oct 5, 2024

...for the Florida Keys of Monroe County



Situation Overview

Tropical Depression Fourteen

- Tropical Depression Fourteen has formed over the southwestern Gulf of Mexico
- There are no tropical storm watches or warnings in effect for any portion of the Florida Keys at this time.
- There is high uncertainty in the level of potential impacts to the Florida Keys. However, these impacts may include:
 - Storm Surge flooding, with potential saltwater flooding over Gulfside and Bayside locations of the Florida Keys Wednesday through Thursday. The highest coastal flooding may occur along the eastern portion of Florida Bay Wednesday night and Thursday.
 - A potential for tropical storm force winds. If realized, tropical storm force winds could arrive as early as late Tuesday morning, but are most likely to arrive Tuesday evening.
 - A few thundery squalls with localized wind gusts of 55 to 65 mph Tuesday night through Wednesday.
 - Flooding rainfall possible with amounts most likely in the 3 to 6 inch range, a few locations as much as 10 inches through Friday.
- Residents and visitors in the Florida Keys should monitor the future progress of Tropical Depression Fourteen closely through the remainder of the weekend and through the middle of next week in case protective actions become necessary.



Situation Overview

Tropical Depression Fourteen



NOTE: Do not focus on the exact track.
Impacts can occur well outside the area enclosed by the cone.

Tropical Depression Fourteen is expected to move slowly northeast or east-northeast during the next day or so. A faster east-northeast to northeast motion is forecast by Monday and Tuesday. On the forecast track, the depression is forecast to move across the south-central Gulf of Mexico on Monday and Tuesday, and approach the west coast of the Florida Peninsula by midweek.

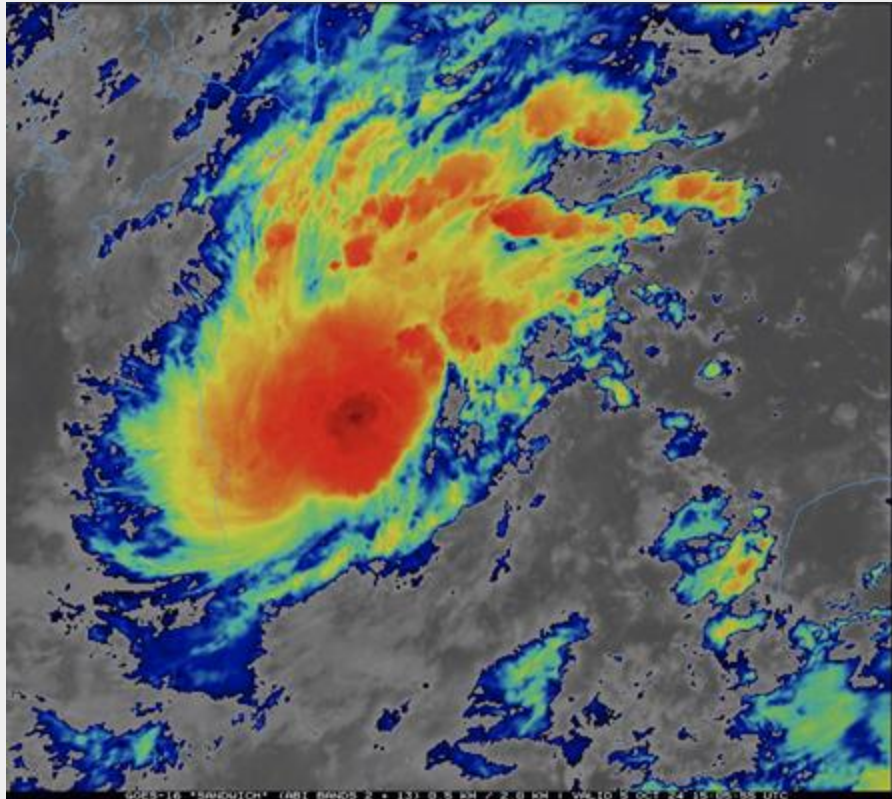
Rapid strengthening is forecast during the next few days. The depression is forecast to become a tropical storm later today and a hurricane by early Monday. The system could become a major hurricane while it moves across the central and eastern Gulf of Mexico.

Remember - the forecast track error cone only represents the $\frac{2}{3}$ chance that the center of the potential tropical cyclone will track, and NOT the area of weather impacts.



Current Satellite View

Tropical Depression Fourteen



- Tropical Depression Fourteen was located over the southwestern Gulf of Mexico at of 11:00 am ET, centered about 350 miles west of Progreso on the Yucatan Peninsula of Mexico.
- Drifting toward the north-northeast at 3 mph.
- Maximum sustained winds were near 35 mph with higher gusts.



Tropical Storm Wind Speed Probabilities

Tropical Depression Fourteen



Community	Chance of Sustained Tropical Storm Force Wind (34+ knots / 39+ mph)
Key West	38%
Marathon/Key Colony Beach	33%
Layton	31%
Islamorada	30%
Key Largo	28%
Ocean Reef	25%

The chances for sustained tropical storm-force winds were nearly steady throughout the Florida Keys, ranging from just above 1-in-4 at Key West to around 1-in-10 at Ocean Reef.

If realized, tropical storm force winds could arrive as soon as late Tuesday morning, but are most likely to arrive Tuesday evening.



50 kt (58 mph) Wind Speed Probabilities

Tropical Depression Fourteen



Community	Chance of Sustained Destructive Force (Military) Wind (50+ knots / 39+ mph)
Key West	10
Marathon/Key Colony Beach	8
Layton	7
Islamorada	6
Key Largo	6
Ocean Reef	5

The chances for sustained 50-knot strong tropical-storm force winds remain 3% or less throughout the Florida Keys.



Key Take-Aways

Tropical Depression Fourteen

- Tropical Depression Fourteen has formed over the southwestern Gulf of Mexico
- There are no tropical storm watches or warnings in effect for any portion of the Florida Keys at this time.
- There is high uncertainty in the level of potential impacts to the Florida Keys. However, these impacts may include:
 - Storm Surge flooding, with potential saltwater flooding over Gulfside and Bayside locations of the Florida Keys Wednesday through Thursday. The highest coastal flooding may occur along the eastern portion of Florida Bay Wednesday night and Thursday.
 - A potential for tropical storm force winds. If realized, tropical storm force winds could arrive as early as late Tuesday morning, but are most likely to arrive Tuesday evening.
 - A few thundery squalls with localized wind gusts of 55 to 65 mph Tuesday night through Wednesday.
 - Flooding rainfall possible with amounts most likely in the 3 to 6 inch range, a few locations as much as 10 inches through Friday.
- Residents and visitors in the Florida Keys should monitor the future progress of Tropical Depression Fourteen closely through the remainder of the weekend and through the middle of next week in case protective actions become necessary.



Local Resources

Tropical Depression Fourteen

Next Briefing:
Saturday 6:00 PM ET



Web: weather.gov/key



Phone: 305-295-1316 x3



Facebook: facebook.com/NWSKeyWest



x.com/NWSKeyWest