

**AGENDA**  
**KEY COLONY BEACH CITY COMMISSION**  
**SPECIAL MEETING**  
**‘CITY HALL PROJECT – PRE-CONSTRUCTION NEEDS’**

Thursday, December 18<sup>th</sup>, 2025 – 1:00 pm  
Marble Hall, 600 W. Ocean Drive, Key Colony Beach  
& via Zoom Conferencing  
[Zoom Login Information at the end of this Agenda](#)

- 1. Call to Order, Pledge of Allegiance, Prayer, & Roll Call**
- 2. Approval of the Agenda** *(Additions, changes, and deletions can be made via one motion and a second to approve by a majority vote)*
- 3. Citizen Comments and Correspondence**
- 4. Items for Commission Discussion/Approval for City Hall Pre-Construction Needs:**
  - a. Change Order Approval Process
  - b. Reschedule meetings to the afternoons to enable timely construction work – **Pg. 1**
  - c. Discussion/Approval of Generator Purchase:
    - 1. Option 1:** 200REOZJF, 96-hour / 1517 Gallon Tank - at 100% (feeds entire building but excludes post office), estimated \$105,000.00 Leadtime: 15 weeks - **CURRENTLY IN PLANS**
    - 2. Option 2:** 200REOZJF, 48-hour / 765 Gallon Tank - at 100% (feeds entire building but excludes post office) **estimated \$90,000.00 -+ Leadtime: 12-15 weeks – Pgs. 2-17**
    - 3. Option 3:** 150REOZJF, 48-hour / 595 Gallon Tank - at 100% (excludes marble hall’s panels in the storage closet that includes the boat lift and the kitchen panel) **estimated \$75,000 -+ Leadtime: 12-15 weeks – Pgs. 18-21**
  - d. Review locations for City Events (Farmers Market, KCB Day)
  - e. Discussion/Approval of Builders Risk Insurance Purchase
    - 1. Option1:** Quote by Zurich for builder’s risk (\$1,000.00 deductible) = premium \$36,537.76 – **Pgs. 22-30**
    - 2. Option 2:** Quote by Zurich for builder’s risk (\$10,000.00 deductible) = premium \$31,072.65 – **Pgs. 31-39**
    - 3. Option 3:** Quote by Westchester Surplus for builder’s risk with windstorm coverage (general builder’s risk deductible \$50,000.00, windstorm deductible \$150,000.00, windstorm sub-limit \$2,500,000.00) = premium \$111,000.00 **\*\*TBA\*\***
- 5. Citizen Comments**
- 6. Adjournment**

Members of the public may speak for three minutes and may only speak once...unless waived by a majority vote of the commission. Persons who need accommodations in order to attend or participate in this meeting should contact the city clerk at 305-289-1212 at least 48 hours prior to this meeting in order to request such assistance. If a person decides to appeal any decision made with respect to any matter considered at any meeting, that person will need a record of the proceedings and for such purpose may need to ensure that a verbatim record of the proceedings is made, which record includes the testimony and evidence upon which the appeal is to be based.

---

***This meeting will be held at the City Hall Auditorium ‘Marble Hall’,  
600 W. Ocean Drive, Key Colony Beach, Florida 33051,  
and via Zoom***

*Join from PC, Mac, iPad, or Android:*

<https://us02web.zoom.us/j/83140723935?pwd=KGHRFHCJYqflJEpSx7wmBpMskDIYXT.1>

*Passcode: 754546*

*Phone one-tap:*

*+13052241968,,83140723935#,,, \*754546# US*

*+13017158592,,83140723935#,,, \*754546# US (Washington DC)*

*Join via audio:*

*+1 305 224 1968 US*

*+1 301 715 8592 US (Washington DC)*

*+1 309 205 3325 US*

*+1 312 626 6799 US (Chicago)*

*+1 646 931 3860 US*

*+1 929 205 6099 US (New York)*

*+1 564 217 2000 US*

*+1 669 444 9171 US*

*+1 507 473 4847 US*

*Webinar ID: 831 4072 3935*

*Passcode: 754546*

*International numbers available: <https://us02web.zoom.us/j/83140723935?pwd=KGHRFHCJYqflJEpSx7wmBpMskDIYXT.1>*

**Marble Hall Proposed Meeting Schedule**

City Commission Meetings – Every third Thursday at 3:30 PM

Utility Board Meeting – Every third Tuesday at 3:30 PM

Planning & Zoning Board Meeting – Every third Wednesday at 3:30 PM

Beautification Committee Meeting – Every second Tuesday at 3:30 PM

Recreation Committee Meetings – As needed at 3:30 PM

---

**Community Events held at Marble Hall**

Pilates – Monday, Wednesday, Friday 7:45 AM to 8:45 AM

Book Club – Every second Thursday at 3:00 PM

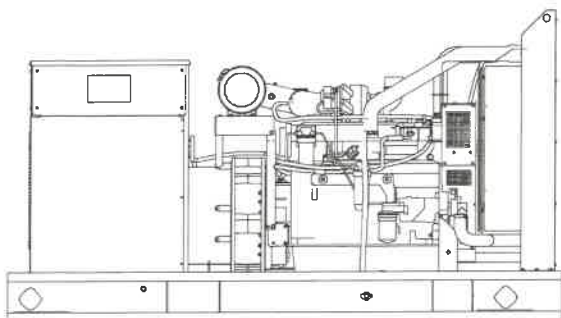
Sewing Lessons – Every Wednesday at 2:00 PM

Fishing & Boating Club – Every first Friday at 6:00 PM

**Tier 3 EPA-Certified for Stationary  
Emergency Applications**

**Ratings Range**

		<b>60 Hz</b>
Standby:	<b>kW</b>	168-200
	<b>kVA</b>	195-250
Prime	<b>kW</b>	158-180
	<b>kVA</b>	175-225



**Standard Features**

- Rehlko provides one-source responsibility for the generating system and accessories.
- Approved for use with certified renewable Hydrotreated Vegetable Oil (HVO)/Renewable Diesel (RD) fuels compliant with EN15940/ASTM D975.
- The generator set and its components are prototype-tested, factory-built, and production-tested.
- The 60 Hz generator set offers a UL 2200 listing.
- The generator set accepts rated load in one step.
- The 60 Hz generator set meets NFPA 110, Level 1, when equipped with the necessary accessories and installed per NFPA standards.
- A one-year limited warranty covers all generator set systems and components. Two- and five-year extended limited warranties are also available.
- Alternator features:
  - The unique Fast-Response® X excitation system delivers excellent voltage response and short-circuit capability using a rare-earth, permanent magnet (PM)-excited alternator. (4S13X alternator)
  - The unique Fast-Response® II excitation system delivers excellent voltage response and short-circuit capability using a permanent magnet (PM)-excited alternator. (4UA9 and 4UA13 alternators)
  - The brushless, rotating-field alternator has broadrange reconnectability.
- Other features:
  - Rehlko designed controllers for one-source system integration and remote communication. See Controllers on page 3.
  - The low coolant level shutdown prevents overheating (standard on radiator models only).
  - Integral vibration isolation eliminates the need for under-unit vibration spring isolators.
- Multiple circuit breaker configurations.
- Mount up to four circuit breakers to allow circuit protection of selected priority loads.

**Generator Set Ratings**

Alternator	Voltage	Ph	Hz	130°C Rise Standby Rating		105°C Rise Prime Rating	
				kW/kVA	Amps	kW/kVA	Amps
4S13X	120/208	3	60	184/230	638	173/216	600
	127/220	3	60	194/243	636	180/225	590
	120/240	3	60	184/230	553	173/216	520
	139/240	3	60	200/250	601	180/225	541
	220/380	3	60	168/210	319	158/198	300
	277/480	3	60	200/250	301	180/225	271
4UA9	120/208	3	60	200/250	694	180/225	625
	127/220	3	60	200/250	656	180/225	590
	120/240	3	60	200/250	601	180/225	541
	139/240	3	60	200/250	601	180/225	541
	220/380	3	60	200/250	380	180/225	342
	277/480	3	60	200/250	301	180/225	271
4UA13	347/600	3	60	200/250	241	180/225	217
	120/208	3	60	200/250	694	180/225	625
	127/220	3	60	200/250	656	180/225	590
	120/240	3	60	200/250	601	180/225	541
	120/240	1	60	195/195	813	175/175	729
	139/240	3	60	200/250	601	180/225	541
	220/380	3	60	200/250	380	180/225	342
	277/480	3	60	200/250	301	180/225	271
	347/600	3	60	200/250	241	180/225	217

RATINGS: All three-phase units are rated at 0.8 power factor. All single-phase units are rated at 1.0 power factor. *Standby Ratings:* The standby rating is applicable to varying loads for the duration of a power outage. There is no overload capability for this rating. *Prime Power Ratings:* At varying load, the number of generator set operating hours is unlimited. A 10% overload capacity is available for one hour in twelve. Ratings are in accordance with ISO-8528-1 and ISO-3046-1. For limited running time and continuous ratings, consult the factory. Obtain technical information bulletin (TIB-101) for ratings guidelines, complete ratings definitions, and site condition derates. The generator set manufacturer reserves the right to change the design or specifications without notice and without any obligation or liability whatsoever.

### Alternator Specifications

Specifications	Alternator
Type	4-Pole, Rotating-Field
Exciter type	Brushless, Permanent-Magnet
Leads: quantity, type	
4SX, 4UA	12, Reconnectable
Voltage regulator	Solid State, Volts/Hz
Insulation:	NEMA MG1
Material	Class H
Temperature rise	130°C, Standby
Bearing: quantity, type	1, Sealed
Coupling	Flexible Disc
Amortisseur windings	Full
Voltage regulation, no-load to full-load	Controller Dependent
One-step load acceptance	100% of Rating
Unbalanced load capability	100% of Rated Standby Current

- NEMA MG1, IEEE, and ANSI standards compliance for temperature rise and motor starting.
- Sustained short-circuit current of up to 300% of the rated current for up to 10 seconds.
- Sustained short-circuit current enabling downstream circuit breakers to trip without collapsing the alternator field.
- Self-ventilated and dripproof construction.
- Windings are vacuum-impregnated with epoxy varnish for dependability and long life.
- Superior voltage waveform from a two-thirds pitch stator and skewed rotor.

Specifications	Alternator
Peak motor starting kVA:	(35% dip for voltages below)
480 V 4S13X (12 lead)	570
480 V 4UA9 (12 lead)	700
480 V 4UA13 (12 lead)	960

### Application Data

#### Engine

Engine Specifications	
Manufacturer	John Deere
Engine model	6068HFG85A
Engine type	4-Cycle, Turbocharged, Charge Air-Cooled
Cylinder arrangement	6 Inline
Displacement, L (cu. in.)	6.8 (415)
Bore and stroke, mm (in.)	106 x 127 (4.19 x 5.00)
Compression ratio	17.0:1
Piston speed, m/min. (ft./min.)	457 (1500)
Main bearings: quantity, type	7, Replaceable Insert
Rated rpm	1800
Max. power at rated rpm, kWm (BHP)	235 (315)
Cylinder head material	Cast Iron
Crankshaft material	Forged Steel
Valve material:	
Intake	Chromium-Silicon Steel
Exhaust	Stainless Steel
Governor: type, make/model	JDEC Electronic L14 Denso HP3
Frequency regulation, no-load to full-load	Isochronous
Frequency regulation, steady state	±0.25%
Frequency	Fixed
Air cleaner type, all models	Dry

#### Exhaust

Exhaust System	
Exhaust manifold type	Dry
Exhaust flow at rated kW, m³/min. (cfm)	42.8 (1510)
Exhaust temperature at rated kW, dry exhaust, °C (°F)	527 (980)
Maximum allowable back pressure, kPa (in. Hg)	Min. 4 (1.2) Max. 10 (3.0)
Exhaust outlet size at engine hookup, mm (in.)	98 (3.86)

#### Engine Electrical

Engine Electrical System	
Battery charging alternator:	24 Volt
Ground (negative/positive)	Negative
Volts (DC)	24
Ampere rating	45
Starter motor rated voltage (DC)	24
Battery, recommended cold cranking amps (CCA):	
Quantity, CCA rating each	Two, 925
Battery voltage (DC)	12

#### Fuel

Fuel System	
Fuel supply line, min. ID, mm (in.)	11.0 (0.44)
Fuel return line, min. ID, mm (in.)	6.0 (0.25)
Max. lift, fuel pump: type, m (ft.)	Mechanical, 1.8 (6.0)
Max. fuel flow, Lph (gph)	92.7 (24.5)
Max. return line restriction, kPa (in. Hg)	20 (5.9)
Fuel prime pump	Manual
Fuel filter	
Primary	30 Microns
Secondary	2 Microns @ 98% Efficiency
Water Separator	Yes
Recommended fuel	#2 Diesel/HVO/RD

#### Lubrication

Lubricating System	
Type	Full Pressure
Oil pan capacity, L (qt.) §	32.5 (34.4)
Oil pan capacity with filter, L (qt.) §	33.4 (35.3)
Oil filter: quantity, type §	1, Cartridge
Oil cooler	Water-Cooled
§ Rehiko recommends the use of Rehiko Genuine oil and filters.	

## Application Data

### Cooling

#### Radiator System

Ambient temperature, °C (°F)*	50 (122)
Engine jacket water capacity, L (gal.)	11.3 (3.0)
Radiator system capacity, including engine, L (gal.)	27.6 (7.3)
Engine jacket water flow, Lpm (gpm)	230.9 (61)
Heat rejected to cooling water at rated kW, dry exhaust, kW (Btu/min.)	94.2 (5360)
Heat rejected to air charge cooler at rated kW, dry exhaust, kW (Btu/min.)	56.1 (3190)
Water pump type	Centrifugal
Fan diameter, including blades, mm (in.)	787 (31)
Fan, kWm (HP)	8.6 (11.5)
Max. restriction of cooling air, intake and discharge side of radiator, kPa (in. H <sub>2</sub> O)	0.125 (0.5)
* Enclosure with enclosed silencer reduces ambient temperature capability by 5°C (9°F).	

#### Operation Requirements

##### Air Requirements

Radiator-cooled cooling air, m <sup>3</sup> /min. (scfm)†	368.1 (13000)
Combustion air, m <sup>3</sup> /min. (cfm)	17.6 (620)
Heat rejected to ambient air:	
Engine, kW (Btu/min.)	46.9 (2670)
Alternator, kW (Btu/min.)	18.5 (1050)

† Air density = 1.20 kg/m<sup>3</sup> (0.075 lbm/ft<sup>3</sup>)

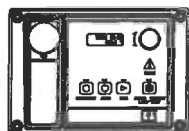
#### Fuel Consumption\*\*

Diesel, Lph (gph) at % load	Standby Rating
100%	58.0 (15.3)
75%	43.3 (11.4)
50%	31.4 (8.3)
25%	19.7 (5.2)

Diesel, Lph (gph) at % load	Prime Rating
100%	50.1 (13.2)
75%	36.1 (9.5)
50%	25.7 (6.8)
25%	16.6 (4.4)

\* Volumetric Fuel consumption is up to 4% higher when using HVO/RD than #2 ULSD.

## Controllers



#### APM402 Controller

Provides advanced control, system monitoring, and system diagnostics for optimum performance and compatibility.

- Digital display and menu control provide easy local data access
- Measurements are selectable in metric or English units
- Remote communication thru a PC via network or serial configuration
- Controller supports Modbus® protocol
- Integrated hybrid voltage regulator with ±0.5% regulation
- Built-in alternator thermal overload protection
- NFPA 110 Level 1 capability

Refer to G6-161 for additional controller features and accessories.



#### APM603 Controller

Provides advanced control, system monitoring, and system diagnostics for optimum performance and compatibility.

- 7-inch graphic display with touch screen and menu control provides easy local data access
- Measurements are selectable in metric or English units
- Paralleling capability to control up to 8 generators on an isolated bus with first-on logic, synchronizer, kW and kVAR load sharing, and protective relays
- Note: Parallel with other APM603 controllers only
- Generator management to turn paralleled generators off and on as required by load demand
- Load management to connect and disconnect loads as required
- Controller supports Modbus® RTU, Modbus® TCP, SNMP and BACnet®
- Integrated voltage regulator with ±0.25% regulation
- Built-in alternator thermal overload protection
- UL-listed overcurrent protective device
- NFPA 110 Level 1 capability

Refer to G6-162 for additional controller features and accessories.



#### Decision-Maker® 6000 Paralleling Controller

Provides advanced control, system monitoring, and system diagnostics with remote monitoring capabilities for paralleling multiple generator sets.

- Paralleling capability to control up to 8 generators on an isolated bus with first-on logic, synchronizer, kW and kVAR load sharing, and protective relays
- Note: Parallel with other Decision-Maker® 6000 controllers only
- Digital display and keypad provide easy local data access
- Measurements are selectable in metric or English units
- Remote communication thru a PC via network or modem configuration
- Controller supports Modbus® protocol
- Integrated voltage regulator with ±0.25% regulation
- Built-in alternator thermal overload protection
- NFPA 110 Level 1 capability

Refer to G6-107 for additional controller features and accessories.

Modbus® is a registered trademark of Schneider Electric.

BACnet® is a registered trademark of ASHRAE.

## Standard Features

- Alternator Protection
- Battery Rack and Cables
- Customer Connection  
(standard with Decision-Maker® 6000 controller only)
- Local Emergency Stop Switch
- Oil Drain Extension
- Operation and Installation Literature

## Available Options

### Circuit Breakers

- | Type  | Rating   |
|---|--|
| <input type="checkbox"/> Magnetic Trip                            | <input type="checkbox"/> 80%                                     |
| <input type="checkbox"/> Thermal Magnetic Trip                    | <input type="checkbox"/> 100%                                    |
| <input type="checkbox"/> Electronic Trip (LI)                     | <b>Operation</b>   |
| <input type="checkbox"/> Electronic Trip with Short Time (LSI)    | <input type="checkbox"/> Manual                                  |
| <input type="checkbox"/> Electronic Trip with Ground Fault (LSIG) | <input type="checkbox"/> Electrically Operated (for paralleling) |

### Circuit Breaker Mounting

- ☐ Generator Mounted
- ☐ Remote Mounted
- ☐ Bus Bar (for remote mounted breakers)

### Enclosures for Remote Mounted Circuit Breakers

- ☐ NEMA 1
- ☐ NEMA 3R

### Approvals and Listings

- ☐ HCAI Pre-Approval
- ☐ CSA Certified
- ☐ IBC Seismic Certification
- ☒ **UL 2200 Listing**
- ☐ Hurricane Rated Enclosure

### Enclosed Unit

- ☒ **Sound Enclosure (with enclosed critical silencer)**
- ☐ Weather Enclosure (with enclosed critical silencer)

### Open Unit

- ☐ Exhaust Silencer, Critical (kit: PA-354809)
- ☐ Flexible Exhaust Connector, Stainless Steel

### Fuel System

- ☒ **Flexible Fuel Lines**
- ☒ **Fuel Pressure Gauge**
- ☒ **Subbase Fuel Tanks**

### Controller

- ☐ Common Failure Relay  
(Decision-Maker® 6000 and APM603 controllers only)
- ☐ Decision-Maker® Paralleling System (DPS)  
(Decision-Maker® 6000 controller only)
- ☐ Dry Contact (isolated alarm)  
(Decision-Maker® 6000 controller only)
- ☒ **Two Input/Five Output Module (APM402 controller only)**
- ☐ Four Input/Fifteen Output Module (APM603 controller only)
- ☐ Lockable Emergency Stop Switch
- ☒ **Remote Emergency Stop Switch**
- ☒ **Remote Serial Annunciator Panel**
- ☒ **Run Relay (standard with APM603, optional with others)**
- ☐ Manual Key Switch (APM603 controller only)
- ☐ Manual Speed Adjust (APM402 controller only)

## Cooling System

- ☐ Block Heater, 1800 W, 90-120 V, 1 Ph
- ☒ **Block Heater, 2000 W, 190-240 V, 1 Ph**  
Required for ambient temperatures below 0°C (32°F)

- ☐ Radiator Duct Flange

## Electrical System

- ☒ **Generator Heater**
- ☒ **Battery**
- ☒ **Battery Charger, Equalize/Float Type**
- ☐ Battery Heater

## Miscellaneous

- ☒ **Air Cleaner, Heavy Duty**
- ☐ Air Cleaner Restriction Indicator
- ☐ Certified Test Report
- ☐ Crankcase Emissions Canister
- ☒ **Engine Fluids Added**
- ☒ **Rated Power Factor Testing**
- ☒ **Rodent Guards**

## Literature

- ☒ **General Maintenance**
- ☐ NFPA 110
- ☐ Overhaul
- ☐ Production

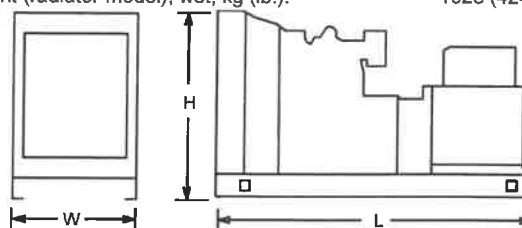
## Warranty

- ☐ 2-Year Basic Limited Warranty
- ☐ 5-Year Basic Limited Warranty
- ☒ **5-Year Comprehensive Limited Warranty**

## Dimensions and Weights

Overall Size, L x W x H, mm (in.): 3000 x 1300 x 1672  
 (118.1 x 51.2 x 65.8)

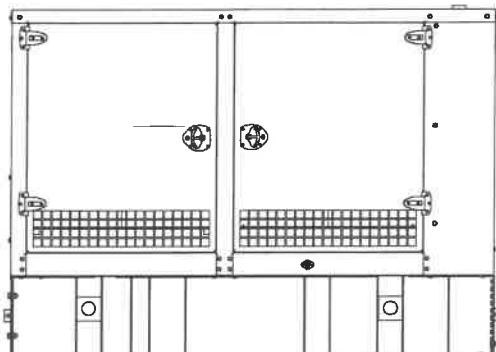
Weight (radiator model), wet, kg (lb.): 1923 (4240)



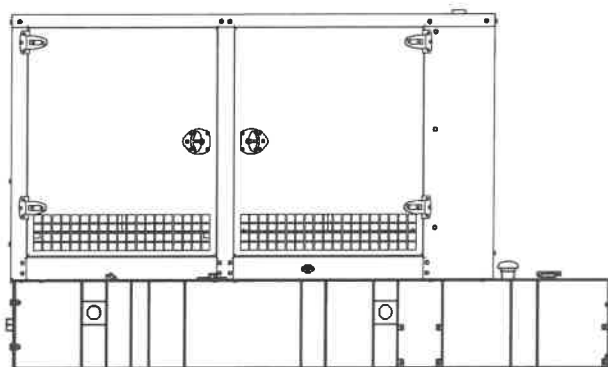
NOTE: This drawing is provided for reference only and should not be used for planning installation. Contact your local distributor for more detailed information.



### Weather/Sound Enclosure and Subbase Fuel Tank Package



**Enclosure with Standard Subbase Fuel Tank**



**Enclosure with State Code Subbase Fuel Tank**

#### Available Approvals and Listings

- ☐ UL 2200 Listing
- ☐ CSA Certified
- ☐ IBC Seismic Certification \*
- ☐ California OSHPD Pre-Approval \*
- ☐ cUL Listing (fuel tanks only)
- ☐ Hurricane Rated Enclosure - Available on sound aluminum 80-300kW models.  
(Impact rated for Large Missile Level E and Wind load rated per Florida Building Code tested to TAS201-94, TAS202-94 and TAS203-94 standards)

**NOTE:** Some models may have limited third-party approvals; see your local distributor for details.

\* Requires a state code subbase fuel tank selection.

**Applicable to the following:**  
**40REOZJC, 50/60REOZJD,**  
**80/100/150/200REOZJF,**  
**125/180REOZJG,**  
**230-275REOZJE, and 300REOZJ**

#### Weather Enclosure Standard Features

- Internal-mounted silencer and flexible exhaust connector.
- Lift base or tank-mounted, steel construction with hinged doors.
- Fade-, scratch-, and corrosion-resistant Kohler® Power Armor™ automotive-grade textured finish.
- Enclosure has four access doors which allow for easy maintenance.
- Lockable, flush-mounted door latches.
- Vertical air inlet and outlet discharge to redirect air and reduce noise.
- Weather enclosure is designed to 150 mph (241 kph) wind load rating.

#### Sound Enclosure Standard Features

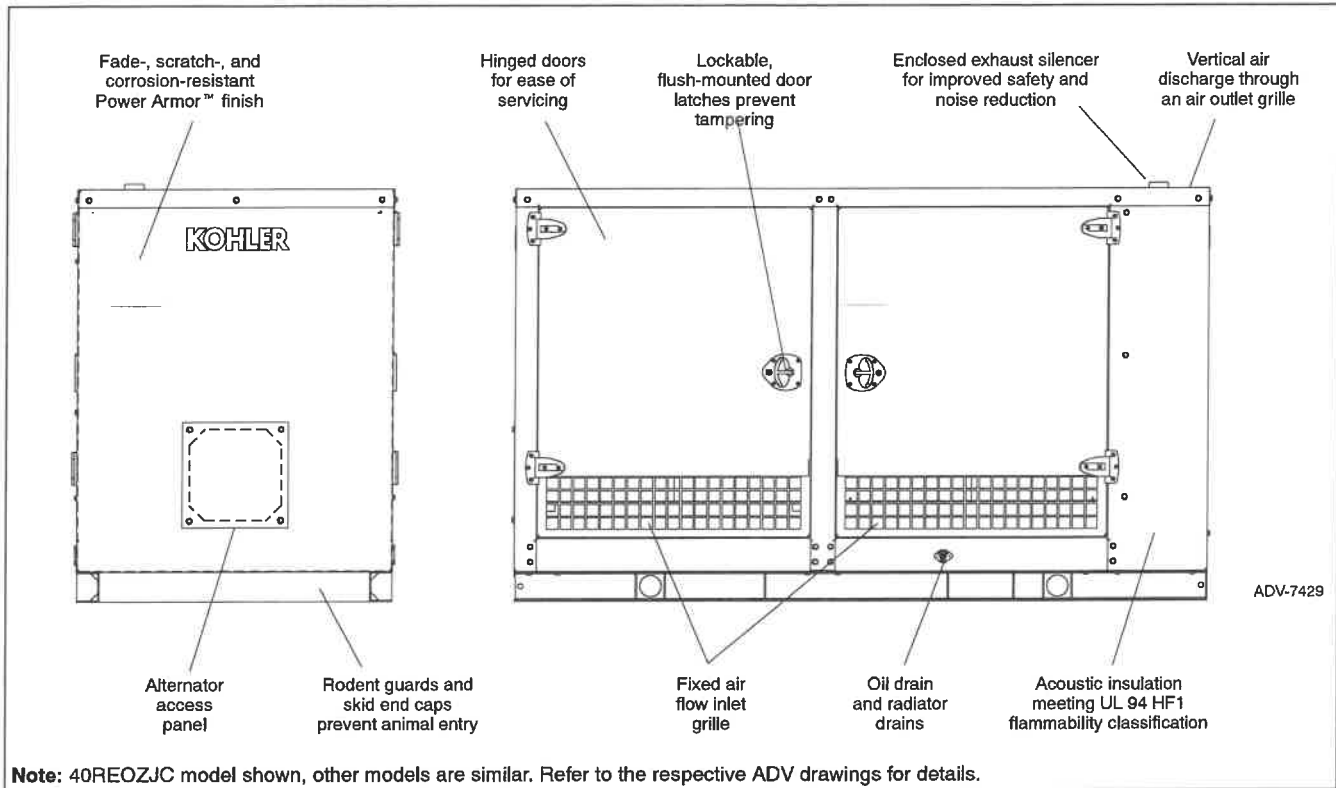
- Includes all of the weather enclosure features with the addition of acoustic insulation material.
- Lift base or tank-mounted, steel or aluminum construction with hinged doors. Aluminum enclosures are recommended for high humidity and/or high salt/coastal regions.
- Acoustic insulation that meets UL 94 HF1 flammability classification and repels moisture absorption.
- Sound-attenuated enclosure that uses up to 51 mm (2 in.) of acoustic insulation.
- Steel sound enclosure is designed to 150 mph (241 kph) wind load rating.
- Aluminum sound enclosure is certified to 186 mph (299 kph) wind load rating for 80-150REOZJ models.
- Aluminum sound enclosure is certified to 181 mph (291 kph) wind load rating for 180-300REOZJ models.

#### Subbase Fuel Tank Features

- The fuel tank has a Power Armor Plus™ textured epoxy-based rubberized coating.
- The above-ground rectangular secondary containment tank mounts directly to the generator set, below the generator set skid (subbase).
- Both the inner and outer tanks have emergency relief vents.
- Flexible fuel lines are provided with subbase fuel tank selection.
- The secondary containment generator set base tank meets UL 142 tank requirements. The inner (primary) tank is sealed inside the outer (secondary) tank. The outer tank contains the fuel if the inner tank leaks or ruptures.
- State tanks with varying capacities are an available option. Florida Dept. of Environmental Protection (FDEP) File No. EQ-634 approved.



## Weather and Sound Enclosure



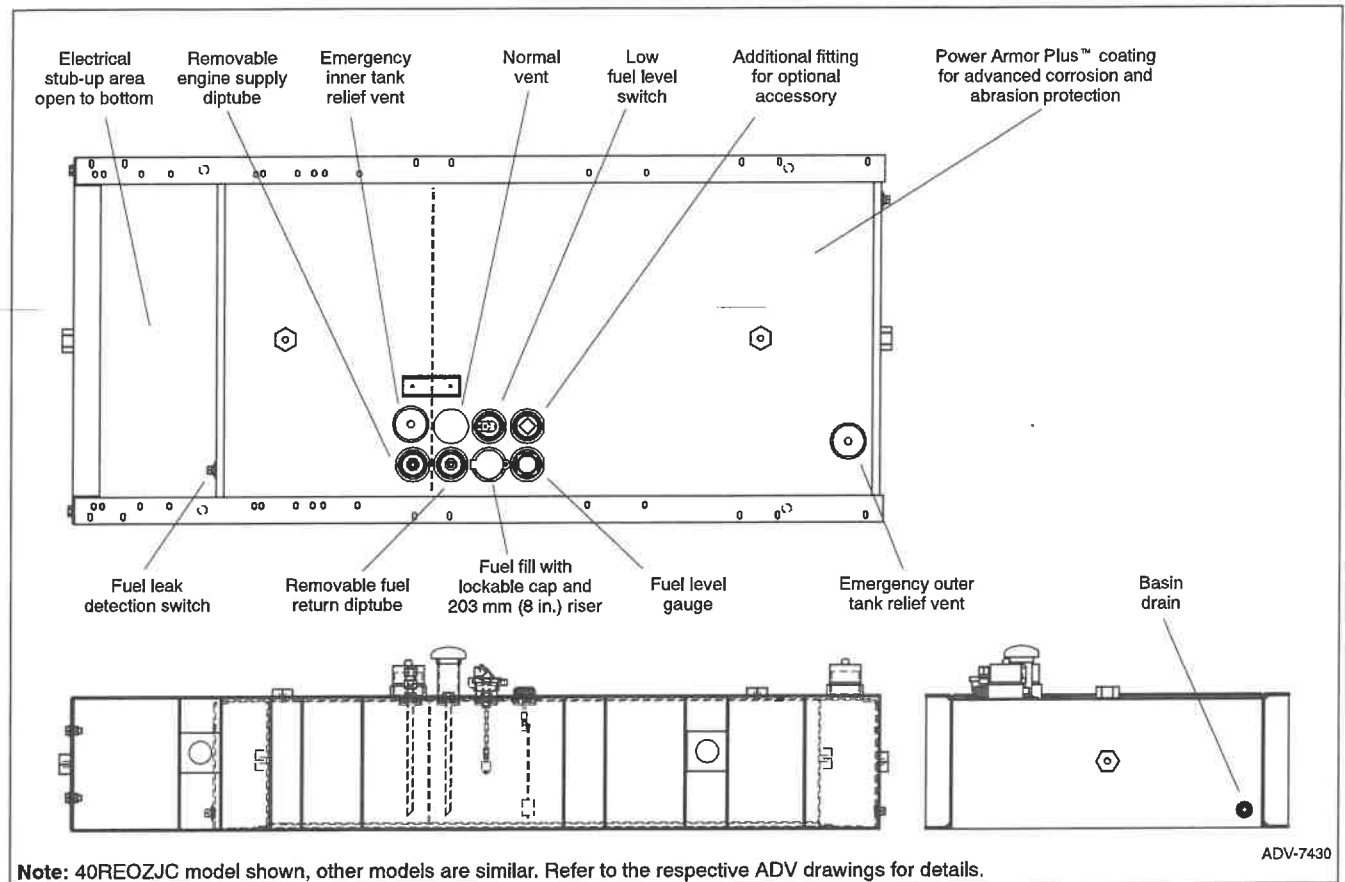
### Enclosure Features

- Available in steel (14 gauge) formed panel, solid construction. Preassembled package offering corrosion resistant, dent resilient structure mounting directly to lift base or fuel tank.
- Power Armor™ automotive-grade finish resulting in advanced corrosion and abrasion protection as well as enhanced edge coverage and color retention.
- Internal exhaust silencer offering maximum component life and operator safety.  
**NOTE:** Installing an additional length of exhaust tail pipe may increase backpressure levels. Please refer to the generator set spec sheet for the maximum backpressure value.
- Interchangeable modular panel construction. Allows complete serviceability or replacement without compromising enclosure design.
- Cooling/combustion air intake with a horizontal air inlet. Sized for maximum cooling airflow.
- Service access. Multi-personnel doors for easy access to generator set control and servicing of the fuel fill, fuel gauge, oil fill, and battery.
- Cooling air discharge. Weather protective design featuring a vertical air discharge outlet grille. Redirects cooling air up and above enclosure to reduce ambient noise.

### Additional Sound Enclosure Features

- Available in steel (14 gauge) or aluminum 3.2 mm (0.125 in.) formed panel, solid construction.
- Sound-attenuated design. Acoustic insulation UL 94 HF1 listed for flame resistance offering up to 51 mm (2 in.) mechanically restrained acoustic insulation.
- Cooling air discharge. The sound enclosures include acoustic insulation with urethane film.
- Snow package enclosure is designed to meet NFPA 110 requirement to -20°C (-4°F).

## Subbase Fuel Tank

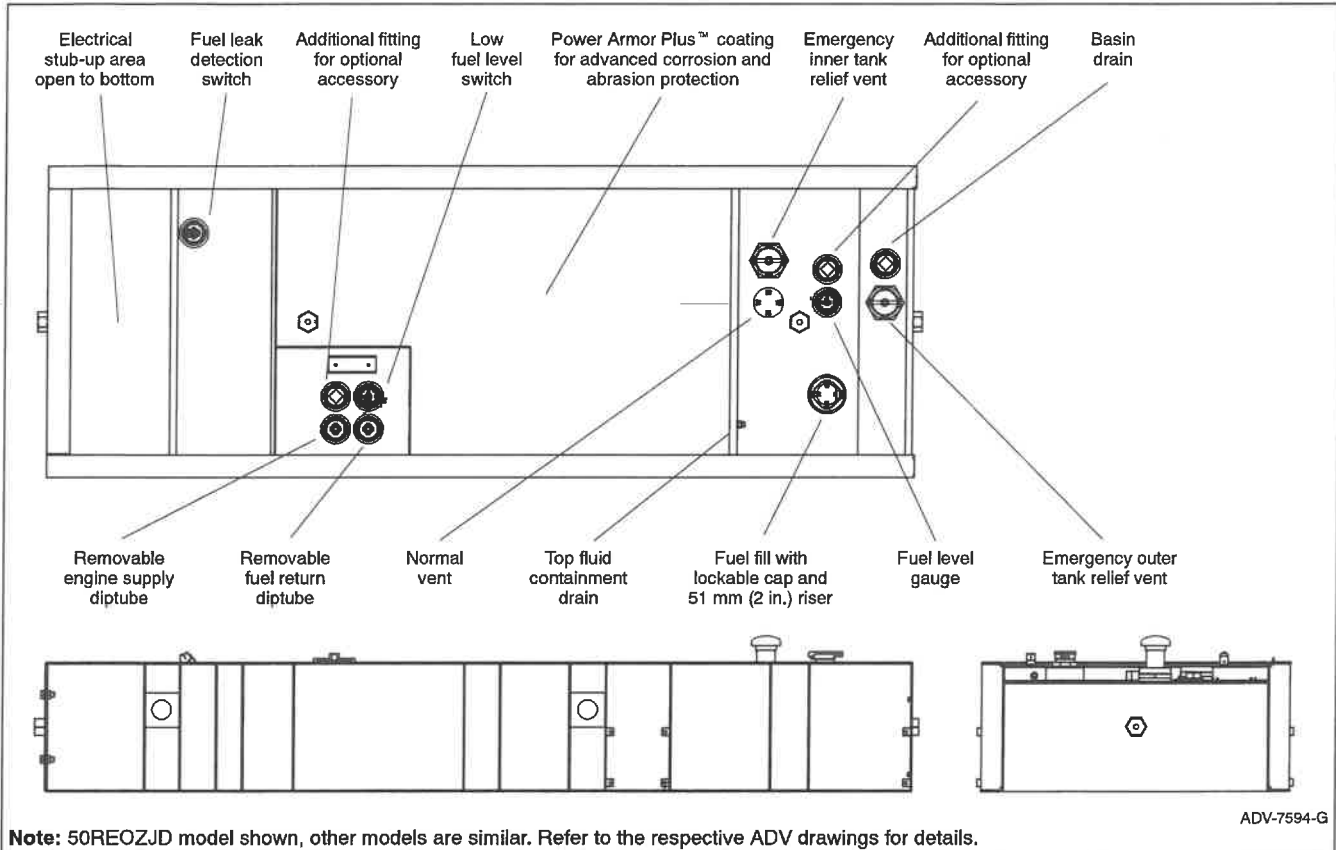


### Standard Subbase Fuel Tank Features

- Extended operation. Usable tank capacity offers full load standby operation of up to 96 hours on select models.
- Power Armor Plus™ textured epoxy-based rubberized coating that creates an ultra-thick barrier between the tank and harsh environmental conditions like humidity, saltwater, and extreme temperatures, and provides advanced corrosion and abrasion protection.
- UL listed. Secondary containment generator set base tank meeting UL 142 requirements.
- NFPA compliant. Designed to comply with the installation standards of NFPA 30 and NFPA 37.
- Integral external lift lugs. Enables crane with spreader-bar lifting of the complete package (empty tank, mounted generator set, and enclosure) to ensure safety.
- Emergency pressure relief vents. Vents ensure adequate venting of the inner and outer tank under extreme pressure and/or emergency conditions.
- Normal vent with cap. Vent is raised above lockable fuel fill.
- Low fuel level switch. Annunciates a 50% low fuel level condition at generator set control.
- Leak detection switch. Annunciates a contained primary tank fuel leak condition at generator set control.
- Electrical stub-up.

**NOTE:** For IBC Seismic Certification and/or California OSHPD Pre-Approval, see State Code Subbase Fuel Tank.

## State Code Subbase Fuel Tank



## State Code Subbase Fuel Tank Features

- State tank designed to comply with the installation standards of the Florida Dept. of Environmental Protection (FDEP) File No. EQ-634.
- Includes all of the Standard Subbase Fuel Tank Features.

## State Code Subbase Fuel Tank Options

### Bottom Clearance

- ☐ I-beams, provides 106 mm (4.2 in.) of ground clearance

### Fuel in Basin Options

- ☐ Fuel in basin switch, Florida Dept. of Environmental Protection (FDEP) File No. EQ-682 approved

### Fuel Fill Options

- ☐ Fill pipe extension to within 152 mm (6 in.) of bottom of fuel tank.
- ☐ 18.9 L (5 gallon) spill containment with 95% shutoff
- ☐ 18.9 L (5 gallon) spill containment
- ☐ 18.9 L (5 gallon) spill containment fill to within 152 mm (6 in.) of bottom of fuel tank
- ☐ 28.4 L (7.5 gallon) spill containment, Florida Dept. of Environmental Protection (FDEP) File No. EQ-882 approved
- ☐ 28.4 L (7.5 gallon) spill containment with 95% shutoff, Florida Dept. of Environmental Protection (FDEP) File No. EQ-882/ EQ-883 approved

### Fuel Supply Options

- ☐ Fire safety valve (installed on fuel supply line)
- ☐ Ball valve (installed on fuel supply line)

### High Fuel Level Switch

- ☐ High fuel level switch
- ☐ High fuel level switch, Florida Dept. of Environmental Protection (FDEP) File No. EQ-682 approved

### Normal Vent Options

- ☐ 3.7 m (12 ft.) above grade (without spill containment)
- ☐ 3.7 m (12 ft.) above grade (with spill containment)

### Tank Marking Options

- ☐ Decal, Combustible Liquids - Keep Fire Away (qty. 2)
- ☐ Decal, NFPA 704 identification (qty. 2)
- ☐ Decal, tank number and safe fuel fill height (qty. 2)
- ☐ Decal, tank number and safe fuel fill height, NFPA 704 identification

### Fluid Containment Options

- ☐ 100% engine fluid containment

### Third-Party Approvals

- ☐ IBC Seismic Certification
- ☐ California OSPHD Pre-Approval

## Enclosure and Subbase Fuel Tank Specifications

Fuel Tank Capacity, L (gal.)	Est. Fuel Supply Hours at 60 Hz with Full Load, Nominal/ Actual	Enclosure and Subbase Fuel Tank					Fuel Tank Height (or additional skid height with no tank), mm (in.)	Sound Pressure Level at 60 Hz with Full Load, Weather/ Sound, dB(A)‡
		Max. Dimensions, mm (in.)			Max. Weight, kg (lb.) *			
		Length	Width	Height	With Steel Enclosure	With Aluminum Enclosure		

### 40REOZJC Standard Fuel Tank

No Tank	0	2320 (91.3)	1077 (42.4)	1521 (60.0)	966 (2130)	853 (1880)	100 (4)	78/65
424 (112)	24/32			1827 (71.9)	1223 (2697)*	1110 (2447)*	406 (16)	
625 (165)	48/48			1980 (78.0)	1274 (2809)*	1161 (2559)*	559 (22)	
958 (253)	72/73			2234 (88.0)	1555 (3429)*	1442 (3179)*	813 (32)	

### 50REOZJD Standard Fuel Tank

No Tank	0	2320 (91.3)	1077 (42.4)	1521 (59.9)	1027 (2265)	914 (2015)	100 (4)	78/66
424 (112)	24/26			1827 (71.9)	1285 (2832)*	1171 (2582)*	406 (16)	
625 (165)	36/38			1980 (78.0)	1335 (2944)*	1222 (2694)*	559 (22)	
946 (250)	48/58			2234 (88.0)	1555 (3429)*	1442 (3179)*	813 (32)	

### 50REOZJD State Code Fuel Tank †

439 (116)	24/26	2896 (114)	1077 (42.4)	1883 (74.1)	1529 (3371)*	1416 (3121)*	356 (14)	78/66
958 (253)	48/58			2213 (87.1)	1653 (3644)*	1540 (3394)*	686 (27)	
1408 (372)	72/86			2441 (96.1)	1804 (3977)*	1691 (3727)*	914 (36)	

### 60REOZJD Standard Fuel Tank

No Tank	0	2320 (91.3)	1077 (42.4)	1521 (59.9)	1164 (2566)	1051 (2316)	100 (4)	78/68
492 (130)	24/26			1878 (73.9)	1438 (3170)*	1324 (2920)*	457 (18)	
783 (207)	36/41			2107 (83.0)	1514 (3338)*	1401 (3088)*	686 (27)	
946 (250)	48/50			2234 (88.0)	1555 (3429)*	1442 (3179)*	813 (32)	

### 60REOZJD State Code Fuel Tank †

556 (147)	24/29	2895 (114)	1077 (42.4)	1959 (77.1)	1616 (3563)*	1503 (3313)*	432 (17)	78/68
958 (253)	48/50			2213 (87.1)	1767 (3896)*	1654 (3646)*	686 (27)	
1408 (372)	72/74			2441 (96.1)	1918 (4228)*	1805 (3978)*	914 (36)	

### 80REOZJF Standard Tank

No Tank	0	2821 (111.1)	1156 (45.5)	1723 (67.8)	1483 (3269)	1351 (2979)	150 (6)	83/69
791 (209)	24/30			2081 (81.9)	1766 (3894)*	1635 (3604)*	508 (20)	
1317 (348)	48/50			2386 (93.9)	1882 (4150)*	1751 (3860)*	813 (32)	

### 80REOZJF State Code Fuel Tank †

814 (215)	24/31	3400 (133.9)	1156 (45.5)	2111 (83.1)	1996 (4400)*	1864 (4110)*	432 (17)	83/69
1571 (415)	48/60			2441 (96.1)	2236 (4929)*	2104 (4639)*	762 (30)	
3089 (816)	96/113	3607 (142.0)	1829 (72.0)	2536 (99.8)	3058 (6741)*	2933 (6466)*	813 (32.0)	

**Note:** Data in table is for reference only, refer to the respective ADV drawings for details.

\* Max. weight includes the generator set (wet) using the largest alternator option, enclosure with acoustic insulation added, silencer, and tank (no fuel).

† State code fuel tank specifications (height and weight) include I-beam option.

‡ Log average sound pressure level of 8 measured positions around the perimeter of the unit at a distance of 7 m (23 ft). Refer to TIB-114 for details.

## Enclosure and Subbase Fuel Tank Specifications (continued)

Fuel Tank Capacity, L (gal.)	Est. Fuel Supply Hours at 60 Hz with Full Load, Nominal/ Actual	Enclosure and Subbase Fuel Tank					Fuel Tank Height (or additional skid height with no tank), mm (in.)	Sound Pressure Level at 60 Hz with Full Load, Weather/ Sound, dB(A)±
		Max. Dimensions, mm (in.)			Max. Weight, kg (lb.) *			
		Length	Width	Height	With Steel Enclosure	With Aluminum Enclosure		
100REOZJF Standard Tank								
No Tank	0	2821 (111.1)	1156 (45.5)	1723 (67.8)	1592 (3510)	1461 (3220)	150 (6)	82/69
791 (209)	24/25			2081 (81.9)	1875 (4134)*	1744 (3844)*	508 (20)	
1696 (448)	48/54			2386 (93.9)	2070 (4564)*	1939 (4274)*	813 (32)	
100REOZJF State Code Fuel Tank †								
814 (215)	24/26	3400 (133.9)	1156 (45.5)	2111 (83.1)	2105 (4641)*	1974 (4351)*	432 (17)	82/69
1571 (415)	48/50			2441 (96.1)	2345 (5170)*	2214 (4880)*	762 (30)	
3089 (816)	96/96			2536 (99.8)	3167 (6981)*	3042 (6706)*	813 (32.0)	
125REOZJG Standard Fuel Tank								
No Tank	0	3532 (139.0)	1153 (45.4)	1739 (68.5)	1651 (3632)	1515 (3333)	0 (0)	87/73
1128 (298)	24/30			2222 (87.5)	2400 (5280)*	2264 (4981)*	483 (19)	
2207 (583)	48/58			2653 (104.4)	2751 (6052)*	2615 (5753)*	914 (36)	
125REOZJG State Code Fuel Tank †								
1196 (316)	24/31	4414 (173.8)	1153 (45.4)	2328 (91.7)	2382 (5240)*	2446 (4941)*	483 (19)	87/73
2252 (595)	48/60			2683 (105.6)	2654 (5839)*	2500 (5511)*	838 (33)	
4403(1163)	96/113			2654 (104.5)	3707 (8173)*	3571 (7873)*	914 (36.0)	
150REOZJF Standard Fuel Tank								
No Tank	0	3532 (139.0)	1153 (45.4)	1739 (68.5)	1860 (4101)	1724 (3800)	0 (0)	86/75
1128 (298)	24/25			2222 (87.5)	2609 (5752)*	2473 (5452)*	483 (19)	
2207 (583)	48/49			2653 (104.4)	2960 (6526)*	2824 (6226)*	914 (36)	
150REOZJF State Code Fuel Tank †								
1196 (316)	24/27	4414 (173.8)	1153 (45.4)	2328 (91.7)	2591 (5712)*	2455 (5412)*	483 (19)	86/75
2252 (595)	48/50			2683 (105.6)	2890 (6361)*	2727 (6012)*	838 (33)	
4403(1163)	96/95			2654 (104.5)	3839 (8463)*	3702 (8163)*	914 (36.0)	
180REOZJG Standard Fuel Tank								
No Tank	0	4094 (161.2)	1338 (52.7)	2038 (80.2)	1928 (4250)	1780 (3925)	0 (0)	85/72
1514 (400)	24/31			2521 (99.3)	2861 (6307)*	2713 (5981)*	483 (19)	
2869 (758)	48/58			2927 (115.2)	3255 (7176)*	3107 (6850)*	889 (35)	
180REOZJG State Code Fuel Tank †								
1556 (416)	24/32	5008 (197.2)	1338 (52.7)	2601 (102.4)	3162 (6971)*	3014 (6646)*	457 (18)	85/72
2896 (765)	48/59			2906 (114.4)	3488 (7690)*	3340 (7363)*	762 (30)	
5742(1517)	96/106			2935 (115.5)	3760 (8289)*	3474 (7659)*	914 (36.0)	
200REOZJF Standard Fuel Tank								
No Tank	0	4094 (161.2)	1338 (52.7)	2025 (79.7)	2508 (5530)	2223 (4900)	0 (0)	87/74
1514 (400)	24/26			2508 (98.7)	3441 (7587)*	3156 (6957)*	483 (19)	
2869 (758)	48/49			2914 (114.7)	3836 (8456)*	3550 (7826)*	889 (35)	
200REOZJF State Code Fuel Tank †								
1575 (416)	24/27	5008 (197.2)	1338 (52.7)	2588 (101.9)	3743 (8251)*	3456 (7621)*	457 (18)	87/74
2896 (765)	48/50			2893 (113.9)	4069 (8970)*	3783 (8340)*	762 (30)	
5742(1517)	96/106			2935 (115.5)	4236 (9339)*	3950 (8709)*	914 (36.0)	

**Note:** Data in table is for reference only, refer to the respective ADV drawings for details.

\* Max. weight includes the generator set (wet) using the largest alternator option, enclosure with acoustic insulation added, silencer, and tank (no fuel).

† State code fuel tank specifications (height and weight) include I-beam option.

± Log average sound pressure level of 8 measured positions around the perimeter of the unit at a distance of 7 m (23 ft). Refer to TIB-114 for details.

## Enclosure and Subbase Fuel Tank Specifications (continued)

Fuel Tank Capacity, L (gal.)	Est. Fuel Supply Hours at 60 Hz with Full Load, Nominal/ Actual	Enclosure and Subbase Fuel Tank					Fuel Tank Height (or additional skid height with no tank), mm (in.)	Sound Pressure Level at 60 Hz with Full Load, Weather/ Sound, dB(A)‡	
		Max. Dimensions, mm (in.)			Max. Weight, kg (lb.) *				
		Length	Width	Height	With Steel Enclosure	With Aluminum Enclosure			
230REOZJE Standard Fuel Tank									
No Tank	0	4121 (162.3)	1338 (52.7)	2153 (84.8)	2654 (5850)	2540 (5600)	260 (10)	87/75	
1787 (472)	24/29			2655 (104.5)	3561 (7850)*	3447 (7600)*	762 (30)		
230REOZJE State Code Fuel Tank †									
2101 (555)	24/34	5009 (197.2)	1338 (52.7)	2894 (113.9)	3895 (8587)*	3782 (8337)*	635 (25)	87/75	
3573 (944)	48/58	5325 (209.7)		3173 (124.9)	4504 (9930)*	4391 (9680)*	914 (36)		
250REOZJE Standard Fuel Tank									
No Tank	0	4121 (162.3)	1338 (52.7)	2153 (84.8)	2699 (5950)	2585 (5700)	260 (10)	89/75	
1787 (472)	24/26			2655 (104.5)	3606 (7950)*	3493 (7700)*	762 (30)		
250REOZJE State Code Fuel Tank †									
2101 (555)	24/31	5009 (197.2)	1338 (52.7)	2894 (113.9)	3940 (8687)*	3827 (8437)*	635 (25)	89/75	
3573 (944)	48/53	5325 (209.7)		3173 (124.9)	4550 (10030)*	4436 (9780)*	914 (36)		
275REOZJE Standard Fuel Tank									
No Tank	0	4121 (162.3)	1338 (52.7)	2153 (84.8)	2835 (6250)	2722 (6000)	260 (10)	89/75	
1787 (472)	24/24			2655 (104.5)	3742 (8250)*	3629 (8000)*	762 (30)		
275REOZJE State Code Fuel Tank †									
2101 (555)	24/28	5009 (197.2)	1338 (52.7)	2894 (113.9)	4076 (8987)*	3963 (8737)*	635 (25)	89/75	
3573 (944)	48/48	5325 (209.7)		3173 (124.9)	4686 (10330)*	4572 (10080)*	914 (36)		
300REOZJ Standard Fuel Tank									
No Tank	0	4121 (162.3)	1338 (52.7)	2153 (84.8)	2835 (6250)	2722 (6000)	260 (10)	89/75	
2067 (546)	24/24			2731 (107.5)	3770 (8311)*	3656 (8061)*	838 (33)		
300REOZJ State Code Fuel Tank †									
2101 (555)	24/25	5009 (197.2)	1338 (52.7)	2894 (113.9)	4076 (8987)*	3963 (8737)*	635 (25)	89/75	
4065(1074)	48/48	5588 (220.0)		3173 (124.9)	4644 (10238)*	4530 (9988)*	914 (36)		

**Note:** Data in table is for reference only, refer to the respective ADV drawings for details.

\* Max. weight includes the generator set (wet) using the largest alternator option, enclosure with acoustic insulation added, silencer, and tank (no fuel).

† State code fuel tank specifications (height and weight) include I-beam option.

‡ Log average sound pressure level of 8 measured positions around the perimeter of the unit at a distance of 7 m (23 ft). Refer to TIB-114 for details.



KOHLER CO., Kohler, Wisconsin 53044 USA  
Phone 920-457-4441, Fax 920-459-1646  
For the nearest sales and service outlet in the  
US and Canada, phone 1-800-544-2444  
KOHLERPower.com

---

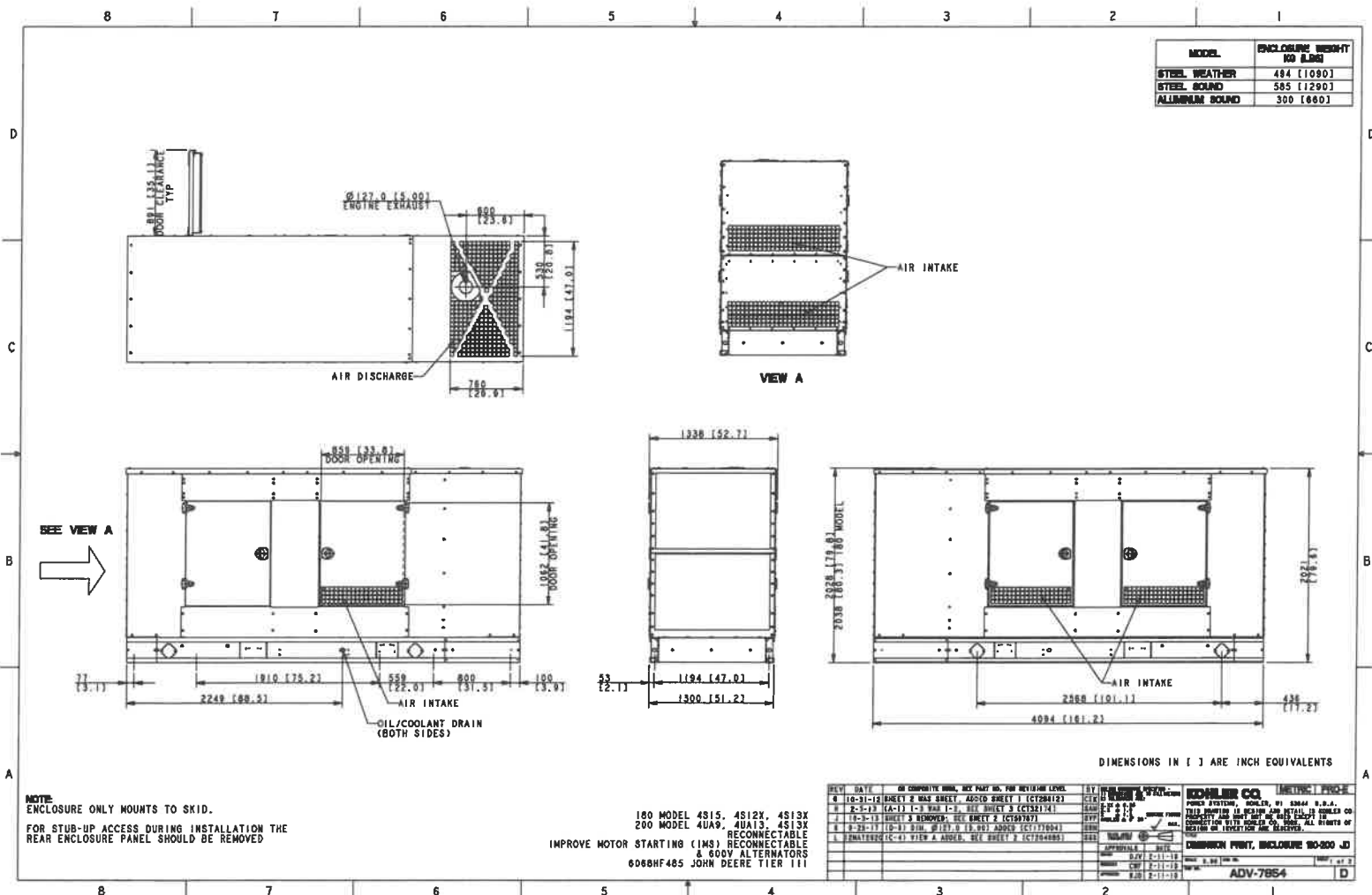
**DISTRIBUTED BY:**

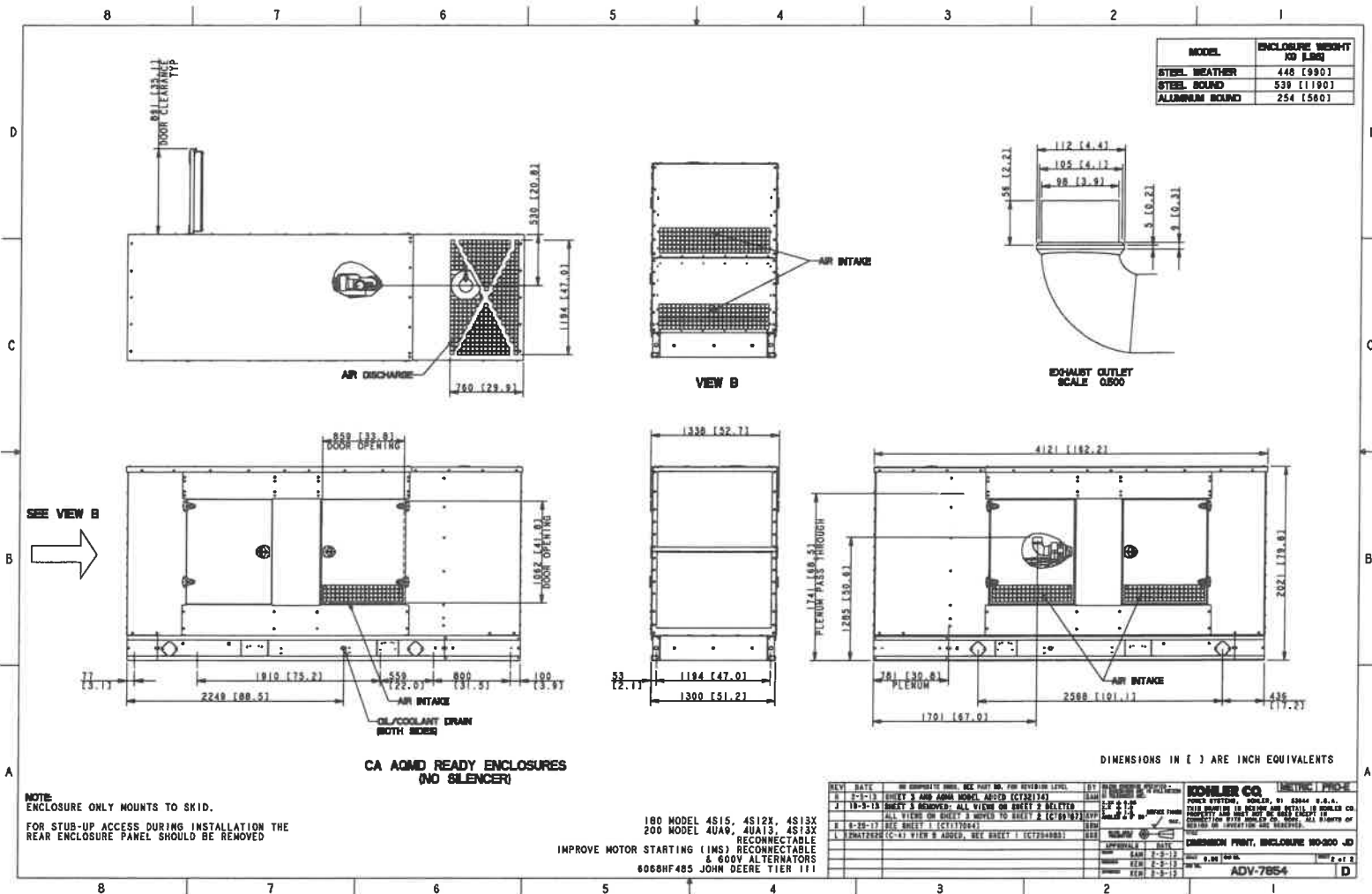
© 2009 Kohler Co. All rights reserved.









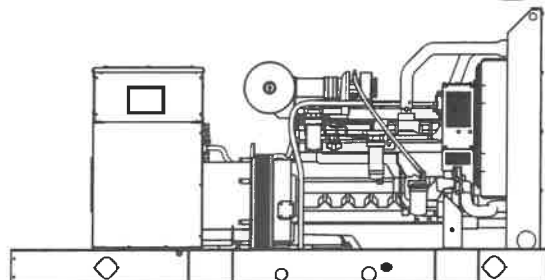




**Tier 3 EPA-Certified for  
Stationary Emergency  
Applications**

### Ratings Range

			60 Hz
Standby:	kW	106- 154	
	kVA	106- 193	
Prime:	kW	99- 140	
	kVA	99- 175	



### Generator Set Ratings

Alternator	Voltage	Ph	Hz	130°C Rise Standby Rating		105°C Rise Prime Rating	
				kW/kVA	Amps	kW/kVA	Amps
4R13X	120/208	3	60	137/171	475	128/160	444
	127/220	3	60	143/179	469	132/165	433
	120/240	3	60	137/171	412	128/160	385
	120/240	1	60	107/107	446	99/99	413
	139/240	3	60	150/188	451	136/170	409
	220/380	3	60	124/155	235	116/145	220
	277/480	3	60	150/188	226	136/170	204
4S12X	120/208	3	60	154/193	534	140/175	486
	127/220	3	60	154/193	505	140/175	459
	120/240	3	60	154/193	463	140/175	421
	120/240	1	60	106/106	442	105/105	438
	139/240	3	60	154/193	463	140/175	421
	220/380	3	60	140/175	266	131/164	249
	277/480	3	60	154/193	232	140/175	210
4S13X	347/600	3	60	154/193	185	140/175	168
	120/208	3	60	154/193	534	140/175	486
	127/220	3	60	154/193	505	140/175	459
	120/240	3	60	154/193	463	140/175	421
	120/240	1	60	113/113	471	113/113	471
	139/240	3	60	154/193	463	140/175	421
	220/380	3	60	154/193	292	140/175	266
4T13X	277/480	3	60	154/193	232	140/175	210
	347/600	3	60	154/193	185	140/175	168
	120/240	1	60	144/144	600	133/133	554

**RATINGS:** All three-phase units are rated at 0.8 power factor. All single-phase units are rated at 1.0 power factor. **Standby Ratings:** The standby rating is applicable to varying loads for the duration of a power outage. There is no overload capability for this rating. **Prime Power Ratings:** At varying load, the number of generator set operating hours is unlimited. A 10% overload capacity is available for one hour in twelve. Ratings are in accordance with ISO-8528-1 and ISO-3046-1. For limited running time and continuous ratings, consult the factory. Obtain technical information bulletin (TIB-101) for ratings guidelines, complete ratings definitions, and site condition derates. The generator set manufacturer reserves the right to change the design or specifications without notice and without any obligation or liability whatsoever.

G5-371 (150REOZJF) 11/22k

### Standard Features

- Kohler Co. provides one-source responsibility for the generating system and accessories.
- Approved for use with certified renewable Hydrotreated Vegetable Oil (HVO) / Renewable Diesel (RD) fuels compliant with EN15940 / ASTM D975.
- The generator set and its components are prototype-tested, factory-built, and production-tested.
- The 60 Hz generator set offers a UL 2200 listing.
- The generator set accepts rated load in one step.
- The 60 Hz generator set meets NFPA 110, Level 1, when equipped with the necessary accessories and installed per NFPA standards.
- A one-year limited warranty covers all generator set systems and components. Two- and five-year extended limited warranties are also available.
- Alternator features:
  - The unique Fast-Response® X excitation system delivers excellent voltage response and short-circuit capability using a rare-earth, permanent magnet (PM)-excited alternator.
  - The brushless, rotating-field alternator has broadrange reconnectability.
- Other features:
  - Kohler designed controllers for one-source system integration and remote communication. See Controllers on page 3.
  - The low coolant level shutdown prevents overheating (standard on radiator models only).
  - Integral vibration isolation eliminates the need for under-unit vibration spring isolators.
- Mount up to three circuit breakers to allow circuit protection of selected priority loads.

## Alternator Specifications

Specifications	Alternator
Manufacturer	Kohler
Type	4-Pole, Rotating-Field
Exciter type	Brushless, Rare-Earth, Permanent-Magnet
Leads: quantity, type	
4RX, 4SX	12, Reconnectable
4TX	4, 120/240 V
Voltage regulator	Solid State, Volts/Hz
Insulation:	NEMA MG1
Material	Class H
Temperature rise	130°C, Standby
Bearing: quantity, type	1, Sealed
Coupling	Flexible Disc
Amortisseur windings	Full
Voltage regulation, no-load to full-load	Controller Dependent
One-step load acceptance	100% of Rating
Unbalanced load capability	100% of Rated Standby Current

- NEMA MG1, IEEE, and ANSI standards compliance for temperature rise and motor starting.
- Sustained short-circuit current of up to 300% of the rated current for up to 10 seconds.
- Sustained short-circuit current enabling downstream circuit breakers to trip without collapsing the alternator field.
- Self-ventilated and dripproof construction.
- Windings are vacuum-impregnated with epoxy varnish for dependability and long life.
- Superior voltage waveform from a two-thirds pitch stator and skewed rotor.

Specifications	Alternator
Peak motor starting kVA:	(35% dip for voltages below)
480 V 4R13X (12 lead)	540
480 V 4S12X (12 lead)	480
480 V 4S13X (12 lead)	570
240 V 4T13X (4 lead)	440

## Application Data

### Engine

Engine Specifications	
Manufacturer	John Deere
Engine model	6068HF285K
Engine type	4-Cycle, Turbocharged, Charge Air-Cooled
Cylinder arrangement	6 Inline
Displacement, L (cu. in.)	6.8 (415)
Bore and stroke, mm (in.)	106 x 127 (4.19 x 5.00)
Compression ratio	17.0:1
Piston speed, m/min. (ft./min.)	457 (1500)
Main bearings: quantity, type	7, Replaceable Insert
Rated rpm	1800
Max. power at rated rpm, kWm (BHP)	177 (237)
Cylinder head material	Cast Iron
Crankshaft material	Forged Steel
Valve material:	
Intake	Chromium-Silicon Steel
Exhaust	Stainless Steel
Governor: type, make/model	JDEC Electronic L16 Denso HP3
Frequency regulation, no-load to full-load	Isochronous
Frequency regulation, steady state	±0.25%
Frequency	Fixed
Air cleaner type, all models	Dry

### Exhaust

Exhaust System	
Exhaust manifold type	Dry
Exhaust flow at rated kW, m <sup>3</sup> /min. (cfm)	33.9 (1197)
Exhaust temperature at rated kW, dry exhaust, °C (°F)	510 (950)
Maximum allowable back pressure, kPa (in. Hg)	7.5 (2.2)
Exhaust outlet size at engine hookup, mm (in.)	98 (3.86)

### Engine Electrical

Engine Electrical System (12/24 Volt*)	
Battery charging alternator:	12 Volt/24 Volt
Ground (negative/positive)	Negative
Volts (DC)	12/24
Ampere rating	65/45
Starter motor rated voltage (DC)	12/24
Battery, recommended cold cranking amps (CCA):	12 Volt/24 Volt
Quantity, CCA rating each	One, 640/Two, 570
Battery voltage (DC)	12
*12-volt or 24-volt engine electrical systems are available.	

### Fuel

Fuel System	
Fuel supply line, min. ID, mm (in.)	11.0 (0.44)
Fuel return line, min. ID, mm (in.)	6.0 (0.25)
Max. lift, fuel pump: type, m (ft.)	Electronic, 1.8 (6.0)
Max. fuel flow, Lph (gph)	96.9 (25.6)
Max. return line restriction, kPa (in. Hg)	20 (5.9)
Fuel prime pump	Manual
Fuel filter	
Primary	30 Microns
Secondary	2 Microns @ 98% Efficiency
Water Separator	Yes
Recommended fuel	#2 Diesel / HVO / RD

### Lubrication

Lubricating System	
Type	Full Pressure
Oil pan capacity, L (qt.) §	27.0 (28.5)
Oil pan capacity with filter, L (qt.) §	27.9 (29.5)
Oil filter: quantity, type §	1, Cartridge
Oil cooler	Water-Cooled
§ Kohler recommends the use of Kohler Genuine oil and filters.	

## Application Data

### Cooling

#### Radiator System

Ambient temperature, °C (°F) *	50 (122)
Engine jacket water capacity, L (gal.)	11.3 (3.0)
Radiator system capacity, including engine, L (gal.)	25.7 (6.8)
Engine jacket water flow, Lpm (gpm)	174 (46)
Heat rejected to cooling water at rated kW, dry exhaust, kW (Btu/min.)	76.3 (4340)
Heat rejected to air charge cooler at rated kW, dry exhaust, kW (Btu/min.)	31.8 (1810)
Water pump type	Centrifugal
Fan diameter, including blades, mm (in.)	660 (26)
Fan, kWm (HP)	7.7 (10.3)
Max. restriction of cooling air, intake and discharge side of radiator, kPa (in. H <sub>2</sub> O)	0.125 (0.5)

\* Enclosure with enclosed silencer reduces ambient temperature capability by 5°C (9°F).  
Snow package enclosure with enclosed silencer reduces ambient temperature capability by 10°C (18°F).

### Operation Requirements

#### Air Requirements

Radiator-cooled cooling air, m <sup>3</sup> /min. (scfm)‡	226.5 (8000)
Combustion air, m <sup>3</sup> /min. (cfm)	13.6 (480)
Heat rejected to ambient air:	
Engine, kW (Btu/min.)	35.9 (2040)
Alternator, kW (Btu/min.)	12.3 (700)

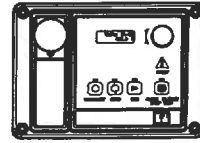
‡ Air density = 1.20 kg/m<sup>3</sup> (0.075 lbm/ft<sup>3</sup>)

#### Fuel Consumption\*\*

Diesel, Lph (gph) at % load	Standby Rating	
100%	44.3	(11.7)
75%	35.1	(9.3)
50%	26.3	(6.9)
25%	16.2	(4.3)
Diesel, Lph (gph) at % load	Prime Rating	
100%	40.6	(10.7)
75%	32.3	(8.5)
50%	24.0	(6.3)
25%	14.4	(3.8)

\*\* Volumetric Fuel consumption is up to 4% higher when using HVO/RD than #2 ULSD.

### Controllers



#### APM402 Controller

Provides advanced control, system monitoring, and system diagnostics for optimum performance and compatibility.

- Digital display and menu control provide easy local data access
- Measurements are selectable in metric or English units
- Remote communication thru a PC via network or serial configuration
- Controller supports Modbus® protocol
- Integrated hybrid voltage regulator with ±0.5% regulation
- Built-in alternator thermal overload protection
- NFPA 110 Level 1 capability

Refer to G6-161 for additional controller features and accessories.



#### APM603 Controller

Provides advanced control, system monitoring, and system diagnostics for optimum performance and compatibility.

- 7-inch graphic display with touch screen and menu control provides easy local data access
- Measurements are selectable in metric or English units
- Paralleling capability to control up to 8 generators on an isolated bus with first-on logic, synchronizer, kW and kVAR load sharing, and protective relays

Note: Parallel with other APM603 controllers only

- Generator management to turn paralleled generators off and on as required by load demand
- Load management to connect and disconnect loads as required
- Controller supports Modbus® RTU, Modbus® TCP, SNMP and BACnet®
- Integrated voltage regulator with ±0.25% regulation
- Built-in alternator thermal overload protection
- UL-listed overcurrent protective device
- NFPA 110 Level 1 capability

Refer to G6-162 for additional controller features and accessories.



#### Decision-Maker® 6000 Paralleling Controller

Provides advanced control, system monitoring, and system diagnostics with remote monitoring capabilities for paralleling multiple generator sets.

- Paralleling capability to control up to 8 generators on an isolated bus with first-on logic, synchronizer, kW and kVAR load sharing, and protective relays

Note: Parallel with other Decision-Maker® 6000 controllers only

- Digital display and keypad provide easy local data access
- Measurements are selectable in metric or English units
- Remote communication thru a PC via network or modem configuration
- Controller supports Modbus® protocol
- Integrated voltage regulator with ±0.25% regulation
- Built-in alternator thermal overload protection
- NFPA 110 Level 1 capability

Refer to G6-107 for additional controller features and accessories.

Modbus® is a registered trademark of Schneider Electric.

BACnet® is a registered trademark of ASHRAE.



## Standard Features

- Alternator Protection
- Battery Rack and Cables
- Customer Connection  
(standard with Decision-Maker® 6000 controller only)
- Local Emergency Stop Switch
- Oil Drain Extension
- Operation and Installation Literature

## Available Options

### Circuit Breakers

- | Type  | Rating   |
|---|--|
| <input type="checkbox"/> Magnetic Trip                            | <input type="checkbox"/> 80%                                     |
| <input type="checkbox"/> Thermal Magnetic Trip                    | <input type="checkbox"/> 100%                                    |
| <input type="checkbox"/> Electronic Trip (LI)                     | <b>Operation</b>   |
| <input type="checkbox"/> Electronic Trip with Short Time (LSI)    | <input type="checkbox"/> Manual                                  |
| <input type="checkbox"/> Electronic Trip with Ground Fault (LSIG) | <input type="checkbox"/> Electrically Operated (for paralleling) |

### Circuit Breaker Mounting

- ☐ Generator Mounted
- ☐ Remote Mounted
- ☐ Bus Bar (for remote mounted breakers)

### Enclosures for Remote Mounted Circuit Breakers

- ☐ NEMA 1
- ☐ NEMA 3R

### Approvals and Listings

- ☐ HCAI Pre-Approval
- ☐ CSA Certified
- ☐ IBC Seismic Certification
- ☐ UL 2200 Listing
- ☐ Hurricane Rated Enclosure

### Enclosed Unit

- ☐ Snow Enclosure (sound enclosure with enclosed critical silencer, intake hood, and electrical package)
- ☐ Sound Enclosure (with enclosed critical silencer)
- ☐ Weather Enclosure (with enclosed critical silencer)

### Open Unit

- ☐ Exhaust Silencer, Critical (kit: PA-354809)
- ☐ Flexible Exhaust Connector, Stainless Steel

### Fuel System

- ☐ Flexible Fuel Lines
- ☐ Fuel Pressure Gauge
- ☐ Subbase Fuel Tanks

### Controller

- ☐ Common Failure Relay  
(Decision-Maker® 6000 and APM603 controllers only)
- ☐ Decision-Maker® Paralleling System (DPS)  
(Decision-Maker® 6000 controller only)
- ☐ Dry Contact (isolated alarm)  
(Decision-Maker® 6000 controller only)
- ☐ Two Input/Five Output Module (APM402 controller only)
- ☐ Four Input/Fifteen Output Module (APM603 controller only)
- ☐ Lockable Emergency Stop Switch
- ☐ Remote Emergency Stop Switch
- ☐ Remote Serial Annunciator Panel
- ☐ Run Relay (standard with APM603, optional with others)
- ☐ Manual Key Switch (APM603 controller only)
- ☐ Manual Speed Adjust (APM402 controller only)

### Cooling System

- ☐ Block Heater, 1800 W, 90-120 V, 1 Ph
- ☐ Block Heater, 2000 W, 190-240 V, 1 Ph  
Required for ambient temperature below 0°C (32°F)
- ☐ Radiator Duct Flange

### Electrical System

- ☐ Generator Heater
- ☐ Battery
- ☐ Battery Charger, Equalize/Float Type
- ☐ Battery Heater

### Miscellaneous

- ☐ Air Cleaner, Heavy Duty
- ☐ Air Cleaner Restriction Indicator
- ☐ Certified Test Report
- ☐ Crankcase Emissions Canister
- ☐ Engine Fluids Added
- ☐ Rated Power Factor Testing
- ☐ Rodent Guards

### Literature

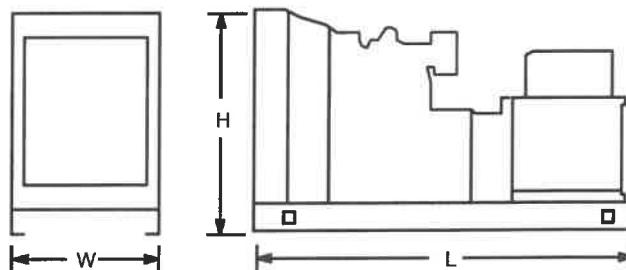
- ☐ General Maintenance
- ☐ NFPA 110
- ☐ Overhaul
- ☐ Production

### Warranty

- ☐ 2-Year Basic Limited Warranty
- ☐ 5-Year Basic Limited Warranty
- ☐ 5-Year Comprehensive Limited Warranty

## Dimensions and Weights

Overall Size, L x W x H, mm (in.): 2950 x 1120 x 1524  
 (116.1 x 44.1 x 60.0)  
 Weight (radiator model), wet, kg (lb.): 1295-1402 (2855-3090)



NOTE: This drawing is provided for reference only and should not be used for planning installation. Contact your local distributor for more detailed information.

### DISTRIBUTED BY:

© 2011 Kohler Co. All rights reserved.

G5-371 (150REOZJF) 11/22k



### **Market leadership**

Zurich has been providing comprehensive solutions for more than 140 years around the globe

### **Financial strength**

We demonstrate strength and stability:  
AA- S&P and A+ A.M. Best ratings

### **Industry experience**

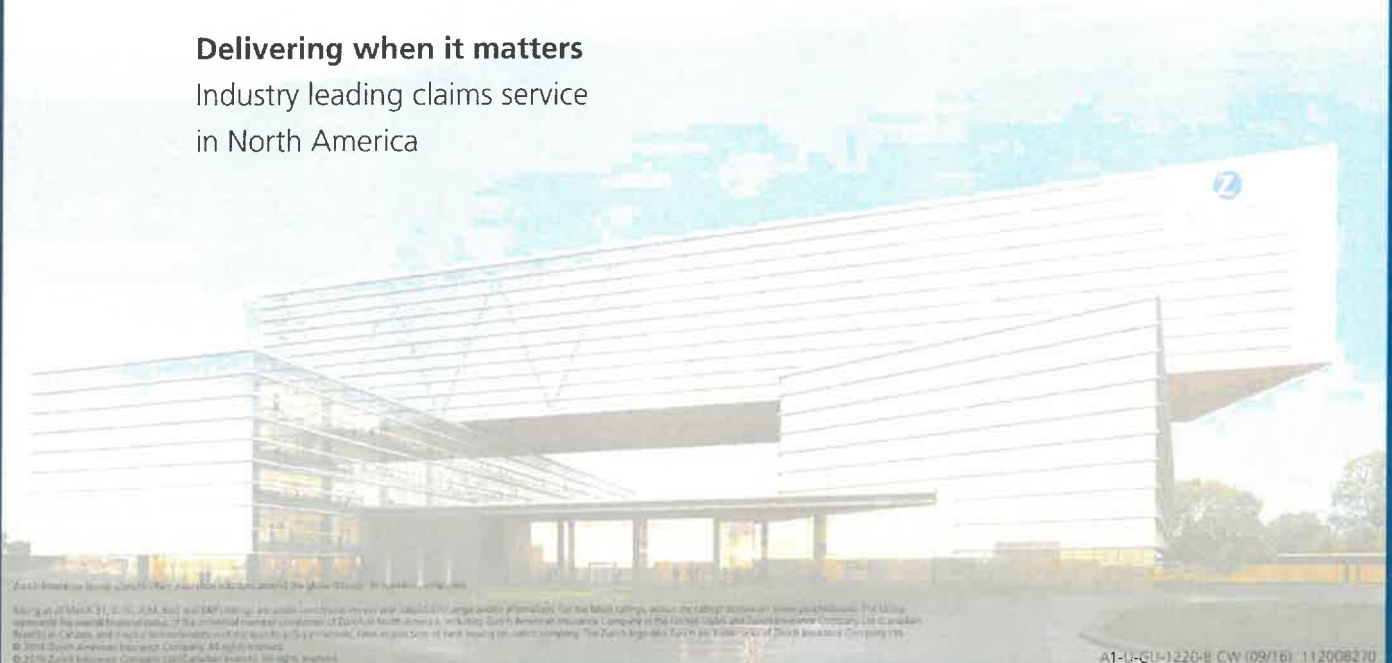
Zurich insures 90% of Fortune 500 companies, and provides cutting-edge insights for 25 industries

### **Exceptional people**

We are a values-based organization and live the Zurich Commitment in all we do, which includes acting responsibly and following our core values

### **Delivering when it matters**

Industry leading claims service in North America



Zurich Insurance Group (Zurich) is a Swiss company and the global leader in the insurance industry.

As of March 31, 2016, A.M. Best and S&P ratings are based on their most recent annual ratings and are subject to change and/or re-evaluation. For the latest ratings, please visit [www.aibest.com](http://www.aibest.com) and [www.standardandpoors.com](http://www.standardandpoors.com). The Group represents the overall financial status of the individual member companies of Zurich in North America, including Zurich American Insurance Company in the United States and Zurich Insurance Company Ltd (Canadian Branch) in Canada, and it does not represent the financial status of any individual member company. The Zurich logo and the Zurich logo are trademarks of Zurich Insurance Company Ltd. © 2016 Zurich American Insurance Company. All rights reserved.

A1-U-GL-1220-B CW (09/16) 112008270

# Zurich Programs Builders Risk and Installation



## Quote Proposal

Attention BOWEN, MICLETTE & BRITT OF FLORIDA, LLC: —

Thank you for the opportunity to provide you with a quote proposal. The quote is based on the underwriting and rating information, including deductibles and retention, provided to date and may be subject to additional rating, pricing or underwriting considerations. Also, acceptability may be subject to an Engineering and Safety Services survey and compliance with its recommendations.

This is a proposal for insurance. It is not an insurance policy. The coverages offered in this proposal are based on information received through the agent and may not include all available coverages. The agent and the customer should discuss the need for any additional or optional coverages. Coverage descriptions are abbreviated and do not indicate in force coverage. Only the policy itself provides coverage.

This proposal is not a part of and is not incorporated into the insurance policy. If there is any conflict between the coverage descriptions shown in this proposal and the actual insurance policy, the insurance policy prevails. The insurance policy supercedes this proposal.

Thank you,

Builders Risk Underwriter  
US Assure  
8230 Nations Way  
Jacksonville, Florida 32256  
800-800-3907

This is a proposal for insurance. It is not an insurance policy. Only the policy itself provides coverage. The coverages offered in this proposal are based on information received through the agent and may not include all available coverages. The client and their agent should discuss any additional or optional coverages needed. Coverage descriptions are abbreviated and do not indicate in force coverage. This proposal is not a part of and is not incorporated into the insurance policy. If there is any conflict between the coverage descriptions shown in this proposal and the actual insurance policy, the insurance policy prevails. The insurance policy supercedes this proposal.

"If you want to learn more about the compensation Zurich pays agents and brokers visit: <http://www.zurichnaproducercompensation.com> or call the following toll free number: (866) 903-1192. This Notice of Disclosure is provided on behalf of Zurich American Insurance Company and its underwriting subsidiaries."

# Zurich Programs

## Builders Risk and Installation



Our Builders Risk Plan offers world-class coverages, flexibility and service to agents and builders nationwide. For more than 30 years, we've been pioneering the development of insurance solutions for construction professionals and have protected the property interests of builders and developers on even the most intricate residential and commercial construction projects. The Builders Risk product offers a wide spectrum of property coverage. Here are few highlights of the coverage offered:

- Construction Forms, Scaffolding and Temporary Structures up to \$100,000
- Re-erection of scaffolding if caused by or results from a covered cause of loss up to \$50,000
- Valuable Papers and Records – Cost of Research up to \$50,000
- Outdoor Trees, Shrubs, Plants and Lawns
- Additional Debris Removal expense is covered up to but not exceeding \$100,000
- Coverage for Pollutant Clean-up and Removal of land and water for up to \$50,000 for each 12 month period of the policy.
- Fire Department Service Charge up to \$50,000
- Reward up to \$25,000
- Waiver of Coinsurance clause if loss is less than or equal to \$25,000
- Foundations
- Our valuation can include profit up to 20% for new structures only if included in the Limit of Insurance you selected
- Broad Collapse coverage
- Back-up or overflow of sewers, drains or sumps up to \$0
- Paving, Curbing, Fences and Outdoor Fixtures
- Ordinance or Law demolition and increased cost Coverage up to \$1,000,000 limit for construction of new structures only
- Inadvertent omission in reporting on a monthly reporting form policy
- Model Homes and Model Home Contents coverage can be added on a reporting form policy

Strong, reliable insurance protection is available from Zurich Programs. Zurich Programs is an integral part of Zurich North America.

Zurich Financial Services ([www.zurich.com](http://www.zurich.com)) is an insurance-based financial services provider with a global network that focuses its activities on its key markets in North America and Europe. Founded in 1872, Zurich is headquartered in Zurich, Switzerland. Through its offices in more than 50 countries, 57,000 Zurich employees serve clients in more than 120 countries. In North America, Zurich ([www.zurichna.com](http://www.zurichna.com)) is a leading commercial property-casualty insurance provider serving the global corporate, large corporate, middle market, specialties and programs sectors.

This is a proposal for insurance. It is not an insurance policy. Only the policy itself provides coverage. The coverages offered in this proposal are based on information received through the agent and may not include all available coverages. The client and their agent should discuss any additional or optional coverages needed. Coverage descriptions are abbreviated and do not indicate in force coverage. This proposal is not a part of and is not incorporated into the insurance policy. If there is any conflict between the coverage descriptions shown in this proposal and the actual insurance policy, the insurance policy prevails. The insurance policy supercedes this proposal.

"If you want to learn more about the compensation Zurich pays agents and brokers visit: <http://www.zurichna.com/producercompensation.com> or call the following toll free number: (866) 903-1192. This Notice of Disclosure is provided on behalf of Zurich American Insurance Company and its underwriting subsidiaries."

# Zurich Programs Builders Risk and Installation



## Quote Proposal Premium Summary

**Prepared For** City of Key Colony Beach  
600 W. Ocean Drive  
Key Colony Beach, FL 33051

**Presented By** BOWEN, MICLETTE & BRITT OF FLORIDA, LLC  
850 CONCOURSE PARKWAY S.  
MAITLAND, FL 32751  
+1 407 551 0094  
02337921

**Proposed Policy Period** **From** 01/01/2026 **To** 01/01/2027  
(12:01 a.m. Standard Time at your address as stated herein)

Coverage and premium information		
This is intended only as a brief outline and does not after any of the coverages, conditions, exclusions or provisions contained in the policy.	Type of coverage	Total Premium (all locations)*
	Builders Risk	\$36,176.00
	Proposed Policy Premium*	\$36,176.00
	State Taxes & Surcharges	\$361.76
	Total fully earned policy premium*	\$36,537.76

\* Premium quotation valid for 30 days from the date on the first page of this proposal.

Policy is fully earned

See attached Disclosure of Terrorism Premium.

This is a proposal for insurance. It is not an insurance policy. Only the policy itself provides coverage. The coverages offered in this proposal are based on information received through the agent and may not include all available coverages. The client and their agent should discuss any additional or optional coverages needed. Coverage descriptions are abbreviated and do not indicate in force coverage. This proposal is not a part of and is not incorporated into the insurance policy. If there is any conflict between the coverage descriptions shown in this proposal and the actual insurance policy, the insurance policy prevails. The insurance policy supercedes this proposal.

"If you want to learn more about the compensation Zurich pays agents and brokers visit:  
<http://www.zurichnaproducercompensation.com> or call the following toll free number: (866) 903-1192. This Notice of Disclosure is provided on behalf of Zurich American Insurance Company and its underwriting subsidiaries."

# Zurich Programs

## Builders Risk and Installation



Primary Builders Risk Coverages	Deductible	Total Limits	Premium
Amount of renovation/improvements	\$1,000	\$5,304,395	
All Covered Property at all Locations	\$1,000	\$5,304,395	\$36,176
Additional Coverages:			
Claim Preparation Expense	None	\$10,000	\$0
Contract Penalties	None	\$25,000	\$0
Debris Removal	None	\$100,000	\$0
Fire Department Service Charge	None	\$50,000	\$0
Ordinance or law	\$1,000	\$1,000,000	
Loss to the undamaged portion of the building	\$1,000	Included	
Demolition cost	\$1,000	\$1,000,000	
Increased cost of construction	\$1,000	\$1,000,000	
Combined Aggregate for Demolition Cost and Increased Cost of Construction	\$1,000	\$1,000,000	\$0
Pollutant Clean-Up and Removal	None	\$50,000	\$0
Rewards	None	\$25,000	\$0
Re-erection of Scaffolding	None	\$50,000	\$0
Scaffolding, Construction Forms and Temporary Structures	None	\$100,000	\$0
Property at a Temporary Storage Location	\$1,000	\$265,220	\$0
Property in Transit	\$1,000	\$265,220	\$0
Valuable Papers and Records	None	\$50,000	\$0
Coverage Extensions	Deductible	Total Limits	Premium
Profit		If included	

This is a proposal for insurance. It is not an insurance policy. Only the policy itself provides coverage. The coverages offered in this proposal are based on information received through the agent and may not include all available coverages. The client and their agent should discuss any additional or optional coverages needed. Coverage descriptions are abbreviated and do not indicate in force coverage. This proposal is not a part of and is not incorporated into the insurance policy. If there is any conflict between the coverage descriptions shown in this proposal and the actual insurance policy, the insurance policy prevails. The insurance policy supercedes this proposal.

"If you want to learn more about the compensation Zurich pays agents and brokers visit:  
<http://www.zurichnaproducercompensation.com> or call the following toll free number: (866) 903-1192. This Notice of Disclosure is provided on behalf of Zurich American Insurance Company and its underwriting subsidiaries."



# Zurich Programs Builders Risk and Installation



Special Conditions	Deductible	Total Limits	Premium
Wind exclusion			\$0

## Quote Proposal

### 24-hour Claim Service

Our claim representatives understand businesses like yours and recognize how difficult a business shutdown can be for you. So, while they provide service that's fast, responsive and fair, their ultimate goal is to minimize your business disruption and get you back to full operation as promptly as possible.

In the event you have a loss, we now offer online loss reporting with immediate acknowledgement. Your claim is assigned to a local claim office, usually within two hours of reporting the loss, but generally no longer than 24 hours. You can also call us toll-free at 1-800-987-3373.

This is a proposal for insurance. It is not an insurance policy. Only the policy itself provides coverage. The coverages offered in this proposal are based on information received through the agent and may not include all available coverages. The client and their agent should discuss any additional or optional coverages needed. Coverage descriptions are abbreviated and do not indicate in force coverage. This proposal is not a part of and is not incorporated into the insurance policy. If there is any conflict between the coverage descriptions shown in this proposal and the actual insurance policy, the insurance policy prevails. The insurance policy supercedes this proposal.

"If you want to learn more about the compensation Zurich pays agents and brokers visit: <http://www.zurichnaproducercompensation.com> or call the following toll free number: (866) 903-1192. This Notice of Disclosure is provided on behalf of Zurich American Insurance Company and its underwriting subsidiaries."



# Zurich Programs Builders Risk and Installation



## Quote Proposal

### Customer and Agent Information

**Named Insured:** City of Key Colony Beach

**Agency Name:** BOWEN, MICLETTE & BRITT OF FLORIDA, LLC

### Customer Location Information

**Location Address:**

600 W Ocean Drive  
Key Colony Beach, FL 33051

**Protection Class:** 4

**Construction:** Joisted Masonry

**# of Stories:** 2

**Primary occupancy:** Office

### Additional Interests

This is a proposal for insurance. It is not an insurance policy. Only the policy itself provides coverage. The coverages offered in this proposal are based on information received through the agent and may not include all available coverages. The client and their agent should discuss any additional or optional coverages needed. Coverage descriptions are abbreviated and do not indicate in force coverage. This proposal is not a part of and is not incorporated into the insurance policy. If there is any conflict between the coverage descriptions shown in this proposal and the actual insurance policy, the insurance policy prevails. The insurance policy supercedes this proposal.

"If you want to learn more about the compensation Zurich pays agents and brokers visit:

<http://www.zurichnaproducercompensation.com> or call the following toll free number: (866) 903-1192. This Notice of Disclosure is provided on behalf of Zurich American Insurance Company and its underwriting subsidiaries."

**THIS DISCLOSURE DOES NOT GRANT ANY COVERAGE OR CHANGE THE TERMS AND CONDITIONS OF ANY COVERAGE UNDER ANY POLICY.**

## **DISCLOSURE OF IMPORTANT INFORMATION RELATING TO TERRORISM RISK INSURANCE ACT**

### **SCHEDULE\***

Premium attributable to risk of loss from certified acts of terrorism for lines of insurance subject to TRIA:

**\$0**

\*Any information required to complete this Schedule, if not shown above, will be shown in the quote or proposal.

#### **A. Disclosure of Premium**

In accordance with the federal Terrorism Risk Insurance Act ("TRIA"), as amended, we are required to provide you with a notice disclosing the portion of your premium, if any, attributable to the risk of loss from terrorist acts certified under that Act for lines subject to TRIA. That portion of premium attributable is shown in the Schedule above. The premium shown in the Schedule above is subject to adjustment upon premium audit, if applicable.

#### **B. Disclosure of Federal Participation in Payment of Terrorism Losses**

You should know that where coverage is provided by this policy for losses resulting from certified acts of terrorism, the United States Government may pay up to 80% of insured losses exceeding the statutorily established deductible paid by the insurance company providing the coverage.

#### **C. Disclosure of \$100 Billion Cap on All Insurer and Federal Obligations**

If aggregate insured losses attributable to terrorist acts certified under TRIA exceed \$100 billion in a calendar year (January 1 through December 31) and an insurer has met its deductible under the program, that insurer shall not be liable for the payment of any portion of the amount of such losses that exceeds \$100 billion, and in such case insured losses up to that amount are subject to pro rata allocation in accordance with procedures established by the Secretary of Treasury.

#### **D. Availability**

As required by TRIA, we have made available to you for lines subject to TRIA coverage for losses resulting from acts of terrorism certified under TRIA with terms, amounts and limitations that do not differ materially from those for losses arising from events other than acts of terrorism.

#### **E. Definition of Act of Terrorism under TRIA**

TRIA defines "act of terrorism" as any act that is certified by the Secretary of the Treasury, in accordance with the provisions of the federal Terrorism Risk Insurance Act ("TRIA"), to be an act of terrorism. The Terrorism Risk Insurance Act provides that the Secretary of Treasury shall certify an act of terrorism:

1. To be an act of terrorism;
2. To be a violent act or an act that is dangerous to human life, property or infrastructure;
3. To have resulted in damage within the United States, or outside of the United States in the case of an air carrier (as defined in section 40102 of Title 49, United States Code) or a United States flag vessel (or a vessel based principally in the United States, on which United States income tax is paid and whose insurance coverage is subject to regulation in the United States), or the premises of a United States mission; and
4. To have been committed by an individual or individuals as part of an effort to coerce the civilian population of the United States or to influence the policy or affect the conduct of the United States Government by coercion.

No act may be certified as an "act of terrorism" if the act is committed as part of the course of a war declared by Congress (except for workers' compensation) or if losses resulting from the act, in the aggregate for insurance subject to TRIA, do not exceed \$5,000,000.



### **Market leadership**

Zurich has been providing comprehensive solutions for more than 140 years around the globe

### **Financial strength**

We demonstrate strength and stability:  
AA- S&P and A+ A.M. Best ratings

### **Industry experience**

Zurich insures 90% of Fortune 500 companies, and provides cutting-edge insights for 25 industries

### **Exceptional people**

We are a values-based organization and live the Zurich Commitment in all we do, which includes acting responsibly and following our core values

### **Delivering when it matters**

Industry leading claims service in North America



Zurich Market Leadership 2016-17. Data compiled by A.M. Best. The data is based on the 2016-17 market share.

Rating as of March 31, 2016. A.M. Best and S&P ratings are based on the company's financial strength, not on the quality of its insurance products. For more information, visit [www.zurichna.com](http://www.zurichna.com). An entity within the Zurich Group may be subject to the rating agency's review. The rating agency's review is not a guarantee of the rating agency's accuracy. The rating agency's review is not a guarantee of the rating agency's accuracy. The rating agency's review is not a guarantee of the rating agency's accuracy.

© 2016 Zurich American Insurance Company. All rights reserved.  
© 2016 Zurich American Insurance Company. All rights reserved.

AT-UG-1220-E CW (09/16) 112009270

# Zurich Programs Builders Risk and Installation



## Quote Proposal

Attention BOWEN, MICLETTE & BRITT OF FLORIDA, LLC: —

Thank you for the opportunity to provide you with a quote proposal. The quote is based on the underwriting and rating information, including deductibles and retention, provided to date and may be subject to additional rating, pricing or underwriting considerations. Also, acceptability may be subject to an Engineering and Safety Services survey and compliance with its recommendations.

This is a proposal for insurance. It is not an insurance policy. The coverages offered in this proposal are based on information received through the agent and may not include all available coverages. The agent and the customer should discuss the need for any additional or optional coverages. Coverage descriptions are abbreviated and do not indicate in force coverage. Only the policy itself provides coverage.

This proposal is not a part of and is not incorporated into the insurance policy. If there is any conflict between the coverage descriptions shown in this proposal and the actual insurance policy, the insurance policy prevails. The insurance policy supercedes this proposal.

Thank you,

Builders Risk Underwriter  
US Assure  
8230 Nations Way  
Jacksonville, Florida 32256  
800-800-3907

This is a proposal for insurance. It is not an insurance policy. Only the policy itself provides coverage. The coverages offered in this proposal are based on information received through the agent and may not include all available coverages. The client and their agent should discuss any additional or optional coverages needed. Coverage descriptions are abbreviated and do not indicate in force coverage. This proposal is not a part of and is not incorporated into the insurance policy. If there is any conflict between the coverage descriptions shown in this proposal and the actual insurance policy, the insurance policy prevails. The insurance policy supercedes this proposal.

"If you want to learn more about the compensation Zurich pays agents and brokers visit:  
<http://www.zurichnaproducercompensation.com> or call the following toll free number: (866) 903-1192. This Notice of Disclosure is provided on behalf of Zurich American Insurance Company and its underwriting subsidiaries."

# Zurich Programs

## Builders Risk and Installation



Our Builders Risk Plan offers world-class coverages, flexibility and service to agents and builders nationwide. For more than 30 years, we've been pioneering the development of insurance solutions for construction professionals and have protected the property interests of builders and developers on even the most intricate residential and commercial construction projects. The Builders Risk product offers a wide spectrum of property coverage. Here are few highlights of the coverage offered:

- Construction Forms, Scaffolding and Temporary Structures up to \$100,000
- Re-erection of scaffolding if caused by or results from a covered cause of loss up to \$50,000
- Valuable Papers and Records – Cost of Research up to \$50,000
- Outdoor Trees, Shrubs, Plants and Lawns
- Additional Debris Removal expense is covered up to but not exceeding \$100,000
- Coverage for Pollutant Clean-up and Removal of land and water for up to \$50,000 for each 12 month period of the policy.
- Fire Department Service Charge up to \$50,000
- Reward up to \$25,000
- Waiver of Coinsurance clause if loss is less than or equal to \$25,000
- Foundations
- Our valuation can include profit up to 20% for new structures only if included in the Limit of Insurance you selected
- Broad Collapse coverage
- Back-up or overflow of sewers, drains or sumps up to \$0
- Paving, Curbing, Fences and Outdoor Fixtures
- Ordinance or Law demolition and increased cost Coverage up to \$1,000,000 limit for construction of new structures only
- Inadvertent omission in reporting on a monthly reporting form policy
- Model Homes and Model Home Contents coverage can be added on a reporting form policy

Strong, reliable insurance protection is available from Zurich Programs. Zurich Programs is an integral part of Zurich North America.

Zurich Financial Services ([www.zurich.com](http://www.zurich.com)) is an insurance-based financial services provider with a global network that focuses its activities on its key markets in North America and Europe. Founded in 1872, Zurich is headquartered in Zurich, Switzerland. Through its offices in more than 50 countries, 57,000 Zurich employees serve clients in more than 120 countries. In North America, Zurich ([www.zurichna.com](http://www.zurichna.com)) is a leading commercial property-casualty insurance provider serving the global corporate, large corporate, middle market, specialties and programs sectors.

This is a proposal for insurance. It is not an insurance policy. Only the policy itself provides coverage. The coverages offered in this proposal are based on information received through the agent and may not include all available coverages. The client and their agent should discuss any additional or optional coverages needed. Coverage descriptions are abbreviated and do not indicate in force coverage. This proposal is not a part of and is not incorporated into the insurance policy. If there is any conflict between the coverage descriptions shown in this proposal and the actual insurance policy, the insurance policy prevails. The insurance policy supercedes this proposal.

"If you want to learn more about the compensation Zurich pays agents and brokers visit: <http://www.zurichnaproducercompensation.com> or call the following toll free number: (866) 903-1192. This Notice of Disclosure is provided on behalf of Zurich American Insurance Company and its underwriting subsidiaries."



# Zurich Programs Builders Risk and Installation



## Quote Proposal Premium Summary

**Prepared For** City of Key Colony Beach  
600 W. Ocean Drive  
Key Colony Beach, FL 33051

**Presented By** BOWEN, MICLETTE & BRITT OF FLORIDA, LLC  
850 CONCOURSE PARKWAY S.  
MAITLAND, FL 32751  
+1 407 551 0094  
02337921

**Proposed Policy Period** **From** 01/01/2026 **To** 01/01/2027  
(12:01 a.m. Standard Time at your address as stated herein)

Coverage and premium information		
This is intended only as a brief outline and does not alter any of the coverages, conditions, exclusions or provisions contained in the policy.	Type of coverage	Total Premium (all locations)*
	Builders Risk	\$30,765.00
	Proposed Policy Premium*	\$30,765.00
	State Taxes & Surcharges	\$307.65
	Total fully earned policy premium*	\$31,072.65

\* Premium quotation valid for 30 days from the date on the first page of this proposal.

Policy is fully earned

See attached Disclosure of Terrorism Premium.

This is a proposal for insurance. It is not an insurance policy. Only the policy itself provides coverage. The coverages offered in this proposal are based on information received through the agent and may not include all available coverages. The client and their agent should discuss any additional or optional coverages needed. Coverage descriptions are abbreviated and do not indicate in force coverage. This proposal is not a part of and is not incorporated into the insurance policy. If there is any conflict between the coverage descriptions shown in this proposal and the actual insurance policy, the insurance policy prevails. The insurance policy supercedes this proposal.

"If you want to learn more about the compensation Zurich pays agents and brokers visit:  
<http://www.zurichnaproducercompensation.com> or call the following toll free number: (866) 903-1192. This Notice of Disclosure is provided on behalf of Zurich American Insurance Company and its underwriting subsidiaries."



# Zurich Programs

## Builders Risk and Installation



Primary Builders Risk Coverages	Deductible	Total Limits	Premium
Amount of renovation/improvements	\$10,000	\$5,304,395	
All Covered Property at all Locations	\$10,000	\$5,304,395	\$30,765
Additional Coverages:			
Claim Preparation Expense	None	\$10,000	\$0
Contract Penalties	None	\$25,000	\$0
Debris Removal	None	\$100,000	\$0
Fire Department Service Charge	None	\$50,000	\$0
Ordinance or law	\$10,000	\$1,000,000	
Loss to the undamaged portion of the building	\$10,000	Included	
Demolition cost	\$10,000	\$1,000,000	
Increased cost of construction	\$10,000	\$1,000,000	
Combined Aggregate for Demolition Cost and Increased Cost of Construction	\$10,000	\$1,000,000	\$0
Pollutant Clean-Up and Removal	None	\$50,000	\$0
Rewards	None	\$25,000	\$0
Re-erection of Scaffolding	None	\$50,000	\$0
Scaffolding, Construction Forms and Temporary Structures	None	\$100,000	\$0
Property at a Temporary Storage Location	\$10,000	\$265,220	\$0
Property in Transit	\$10,000	\$265,220	\$0
Valuable Papers and Records	None	\$50,000	\$0
Coverage Extensions	Deductible	Total Limits	Premium
Profit		If included	

This is a proposal for insurance. It is not an insurance policy. Only the policy itself provides coverage. The coverages offered in this proposal are based on information received through the agent and may not include all available coverages. The client and their agent should discuss any additional or optional coverages needed. Coverage descriptions are abbreviated and do not indicate in force coverage. This proposal is not a part of and is not incorporated into the insurance policy. If there is any conflict between the coverage descriptions shown in this proposal and the actual insurance policy, the insurance policy prevails. The insurance policy supercedes this proposal.

"If you want to learn more about the compensation Zurich pays agents and brokers visit:  
<http://www.zurichproducercompensation.com> or call the following toll free number: (866) 903-1192. This Notice of Disclosure is provided on behalf of Zurich American Insurance Company and its underwriting subsidiaries."

# Zurich Programs

## Builders Risk and Installation



Special Conditions	Deductible	Total Limits	Premium
Wind exclusion			\$0

## Quote Proposal

### 24-hour Claim Service

Our claim representatives understand businesses like yours and recognize how difficult a business shutdown can be for you. So, while they provide service that's fast, responsive and fair, their ultimate goal is to minimize your business disruption and get you back to full operation as promptly as possible.

In the event you have a loss, we now offer online loss reporting with immediate acknowledgement. Your claim is assigned to a local claim office, usually within two hours of reporting the loss, but generally no longer than 24 hours. You can also call us toll-free at 1-800-987-3373.

This is a proposal for insurance. It is not an insurance policy. Only the policy itself provides coverage. The coverages offered in this proposal are based on information received through the agent and may not include all available coverages. The client and their agent should discuss any additional or optional coverages needed. Coverage descriptions are abbreviated and do not indicate in force coverage. This proposal is not a part of and is not incorporated into the insurance policy. If there is any conflict between the coverage descriptions shown in this proposal and the actual insurance policy, the insurance policy prevails. The insurance policy supercedes this proposal.

"If you want to learn more about the compensation Zurich pays agents and brokers visit: <http://www.zurichnaproducercompensation.com> or call the following toll free number: (866) 903-1192. This Notice of Disclosure is provided on behalf of Zurich American Insurance Company and its underwriting subsidiaries."

# Zurich Programs Builders Risk and Installation



## Quote Proposal

### Customer and Agent Information

**Named Insured:** City of Key Colony Beach  
**Agency Name:** BOWEN, MICLETTE & BRITT OF FLORIDA, LLC

### Customer Location Information

**Location Address:**  
600 W Ocean Drive  
Key Colony Beach, FL 33051

**Protection Class:** 4  
**Construction:** Joisted Masonry  
**# of Stories:** 2  
**Primary occupancy:** Office

### Additional Interests

Additional Insured - Builder - Pedro Falcon Contractors, Inc  
31160 Avenue C  
Big Pine Key, FL 33043

This is a proposal for insurance. It is not an insurance policy. Only the policy itself provides coverage. The coverages offered in this proposal are based on information received through the agent and may not include all available coverages. The client and their agent should discuss any additional or optional coverages needed. Coverage descriptions are abbreviated and do not indicate in force coverage. This proposal is not a part of and is not incorporated into the insurance policy. If there is any conflict between the coverage descriptions shown in this proposal and the actual insurance policy, the insurance policy prevails. The insurance policy supercedes this proposal.

"If you want to learn more about the compensation Zurich pays agents and brokers visit:  
<http://www.zurichproducercompensation.com> or call the following toll free number: (866) 903-1192. This Notice of Disclosure is provided on behalf of Zurich American Insurance Company and its underwriting subsidiaries."

**THIS DISCLOSURE DOES NOT GRANT ANY COVERAGE OR CHANGE THE TERMS AND CONDITIONS OF ANY COVERAGE UNDER ANY POLICY.**

## **DISCLOSURE OF IMPORTANT INFORMATION RELATING TO TERRORISM RISK INSURANCE ACT**

### **SCHEDULE\***

Premium attributable to risk of loss from certified acts of terrorism for lines of insurance subject to TRIA:

**\$0**

\*Any information required to complete this Schedule, if not shown above, will be shown in the quote or proposal.

#### **A. Disclosure of Premium**

In accordance with the federal Terrorism Risk Insurance Act ("TRIA"), as amended, we are required to provide you with a notice disclosing the portion of your premium, if any, attributable to the risk of loss from terrorist acts certified under that Act for lines subject to TRIA. That portion of premium attributable is shown in the Schedule above. The premium shown in the Schedule above is subject to adjustment upon premium audit, if applicable.

#### **B. Disclosure of Federal Participation in Payment of Terrorism Losses**

You should know that where coverage is provided by this policy for losses resulting from certified acts of terrorism, the United States Government may pay up to 80% of insured losses exceeding the statutorily established deductible paid by the insurance company providing the coverage.

#### **C. Disclosure of \$100 Billion Cap on All Insurer and Federal Obligations**

If aggregate insured losses attributable to terrorist acts certified under TRIA exceed \$100 billion in a calendar year (January 1 through December 31) and an insurer has met its deductible under the program, that insurer shall not be liable for the payment of any portion of the amount of such losses that exceeds \$100 billion, and in such case insured losses up to that amount are subject to pro rata allocation in accordance with procedures established by the Secretary of Treasury.

#### **D. Availability**

As required by TRIA, we have made available to you for lines subject to TRIA coverage for losses resulting from acts of terrorism certified under TRIA with terms, amounts and limitations that do not differ materially from those for losses arising from events other than acts of terrorism.

#### **E. Definition of Act of Terrorism under TRIA**

TRIA defines "act of terrorism" as any act that is certified by the Secretary of the Treasury, in accordance with the provisions of the federal Terrorism Risk Insurance Act ("TRIA"), to be an act of terrorism. The Terrorism Risk Insurance Act provides that the Secretary of Treasury shall certify an act of terrorism:

1. To be an act of terrorism;
2. To be a violent act or an act that is dangerous to human life, property or infrastructure;
3. To have resulted in damage within the United States, or outside of the United States in the case of an air carrier (as defined in section 40102 of Title 49, United States Code) or a United States flag vessel (or a vessel based principally in the United States, on which United States income tax is paid and whose insurance coverage is subject to regulation in the United States), or the premises of a United States mission; and
4. To have been committed by an individual or individuals as part of an effort to coerce the civilian population of the United States or to influence the policy or affect the conduct of the United States Government by coercion.

No act may be certified as an "act of terrorism" if the act is committed as part of the course of a war declared by Congress (except for workers' compensation) or if losses resulting from the act, in the aggregate for insurance subject to TRIA, do not exceed \$5,000,000.